



ADDENDUM #1

DATE: June 24, 2015

FROM: Cathy A. Puchalski, Supt. of Recreation
ARLINGTON HEIGHTS PARK DISTRICT
847-577-3000

TO: PROSPECTIVE BIDDERS – Forest View Racquet & Fitness Club
Renovations

SUBJECT: ADDENDUM #1 – Casework and Flooring Clarification

ADDENDA TO BID DOCUMENT

CLARIFICATION ON CASEWORK:

Casework sections are general sections to convey design intent. Please reference the casework elevations for the door design intent.

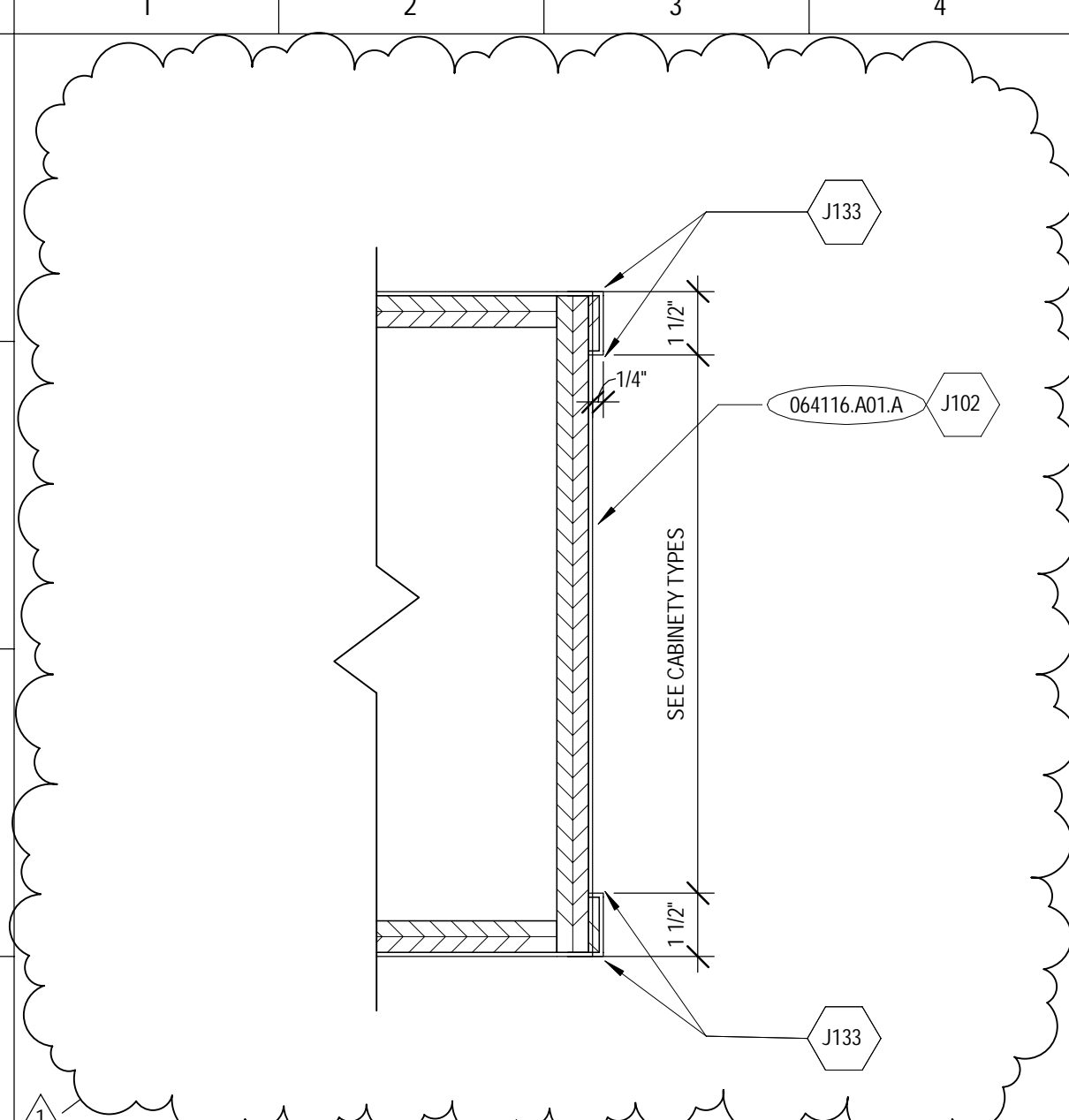
CLARIFICATION ON CASEWORK AND FLOORING:

See addendum sheet A-53 (casework) and addendum sheet A-81 (flooring).

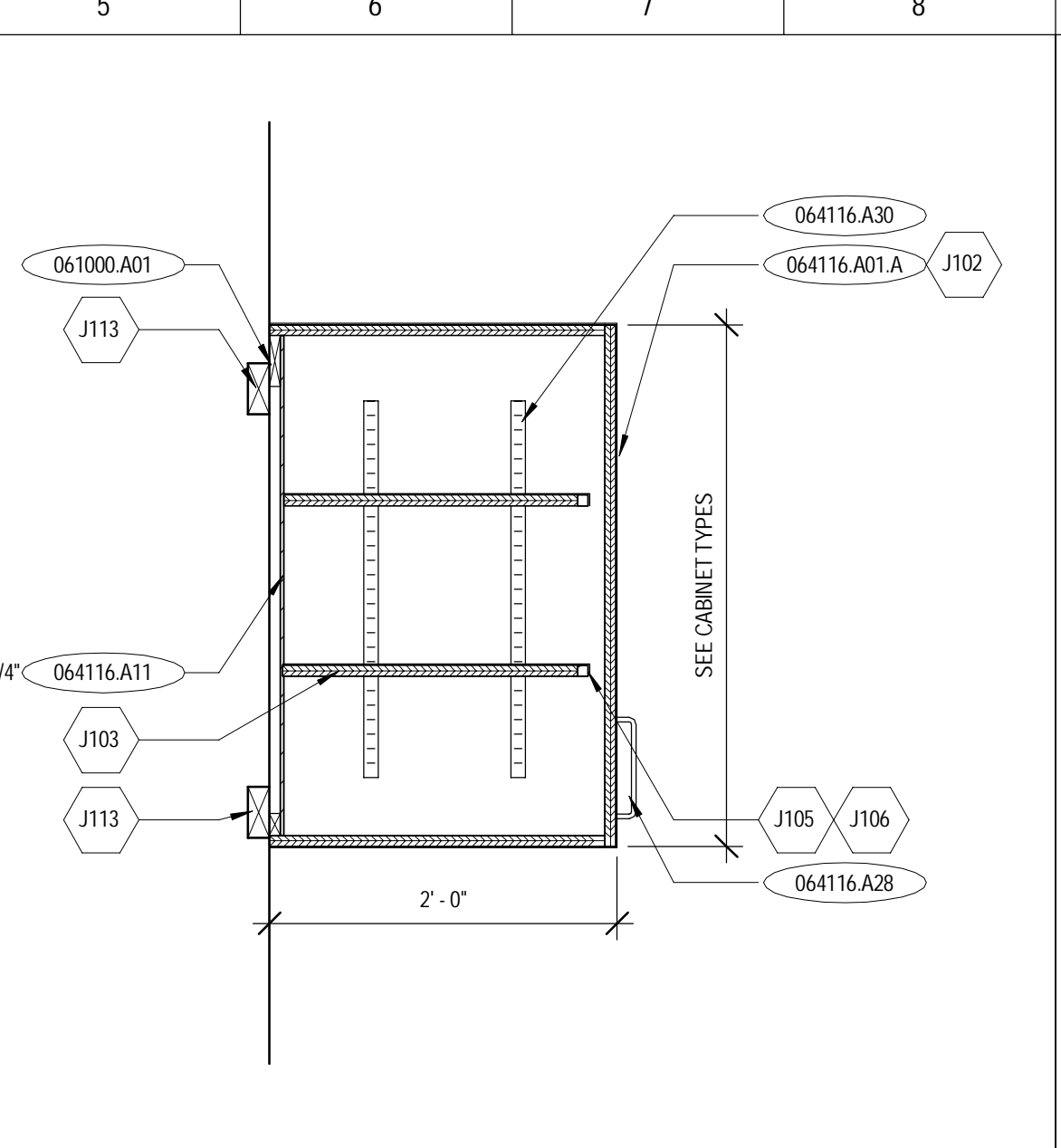
**BIDDERS ARE REQUESTED TO SIGN THIS FORM AS A FORMAL
RECIPT OF THIS ADDENDUM AND TO RETURN IT WITH THE BID
FORM.**

SIGNED BY BIDDER _____

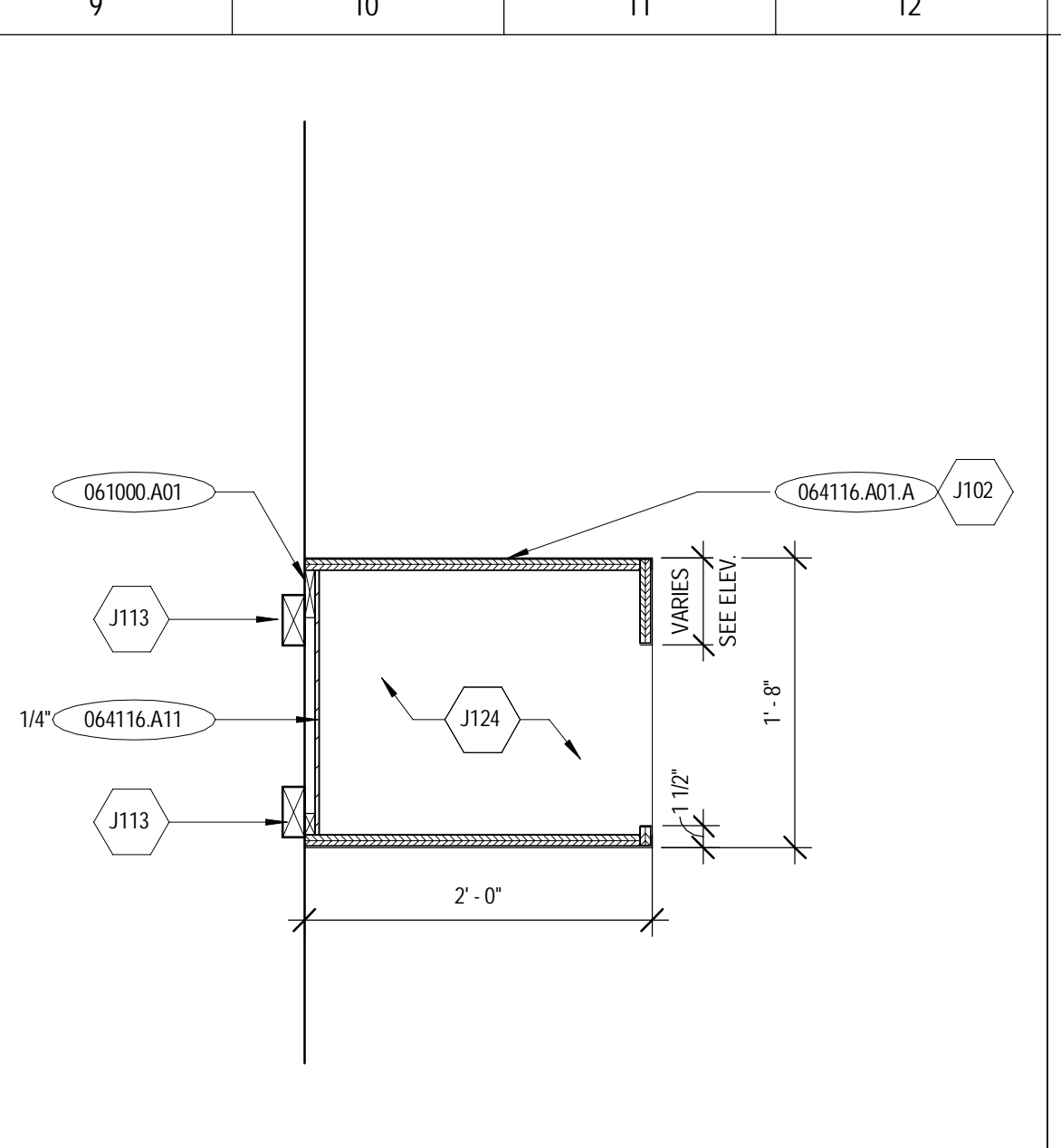
6/24/2015 1:00:30 PM
 C:\Users\maggie.krieger\Desktop\CURRENT REVIT FILES\15-2037.01_AHPd Forest View_Central_2014_Maggie.Krieger.rvt
 Copyright 2014 FGM ARCHITECTS, INC.



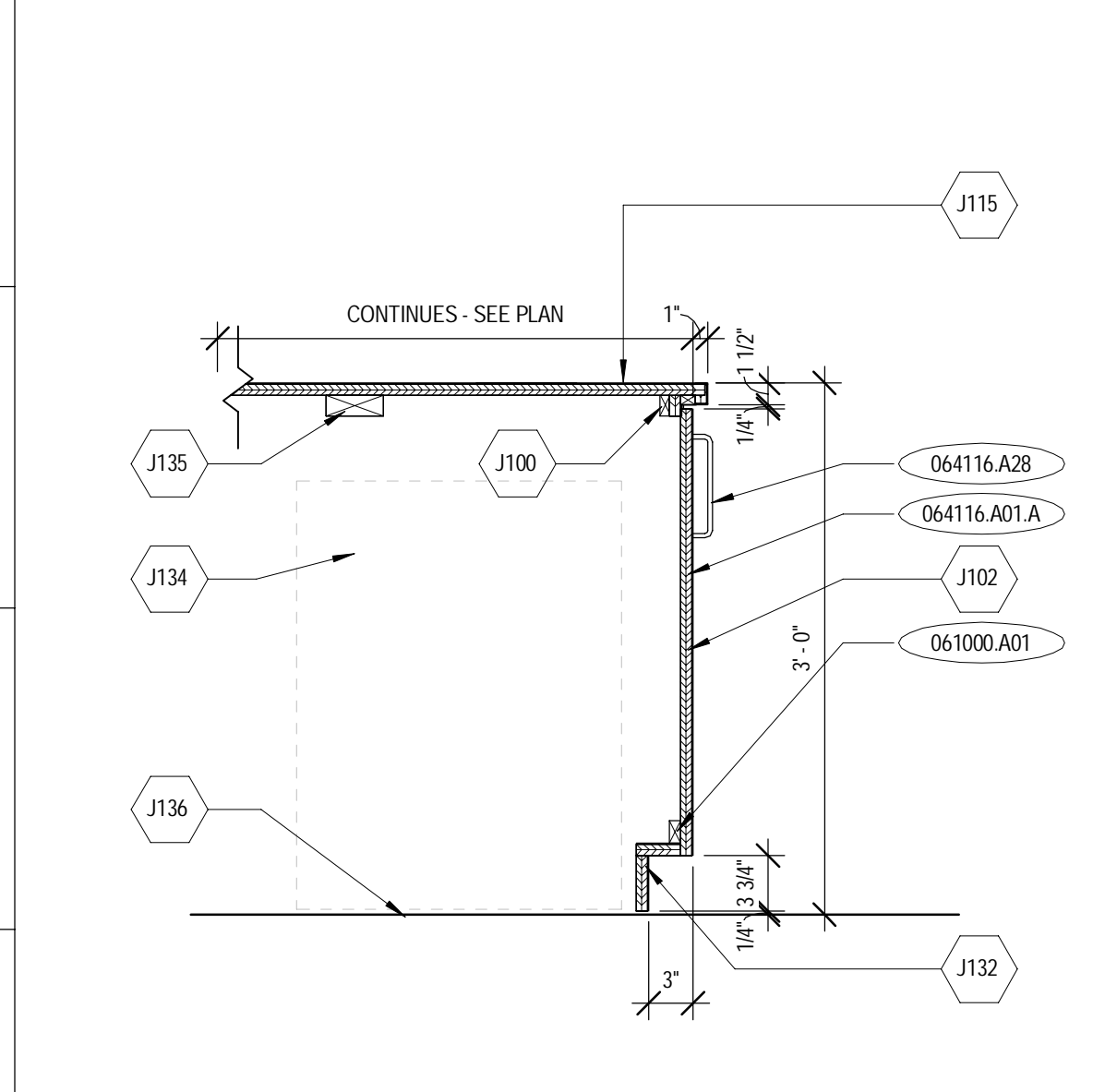
N1 TYPICAL DOOR STYLE SECTION
 3" = 1'-0"



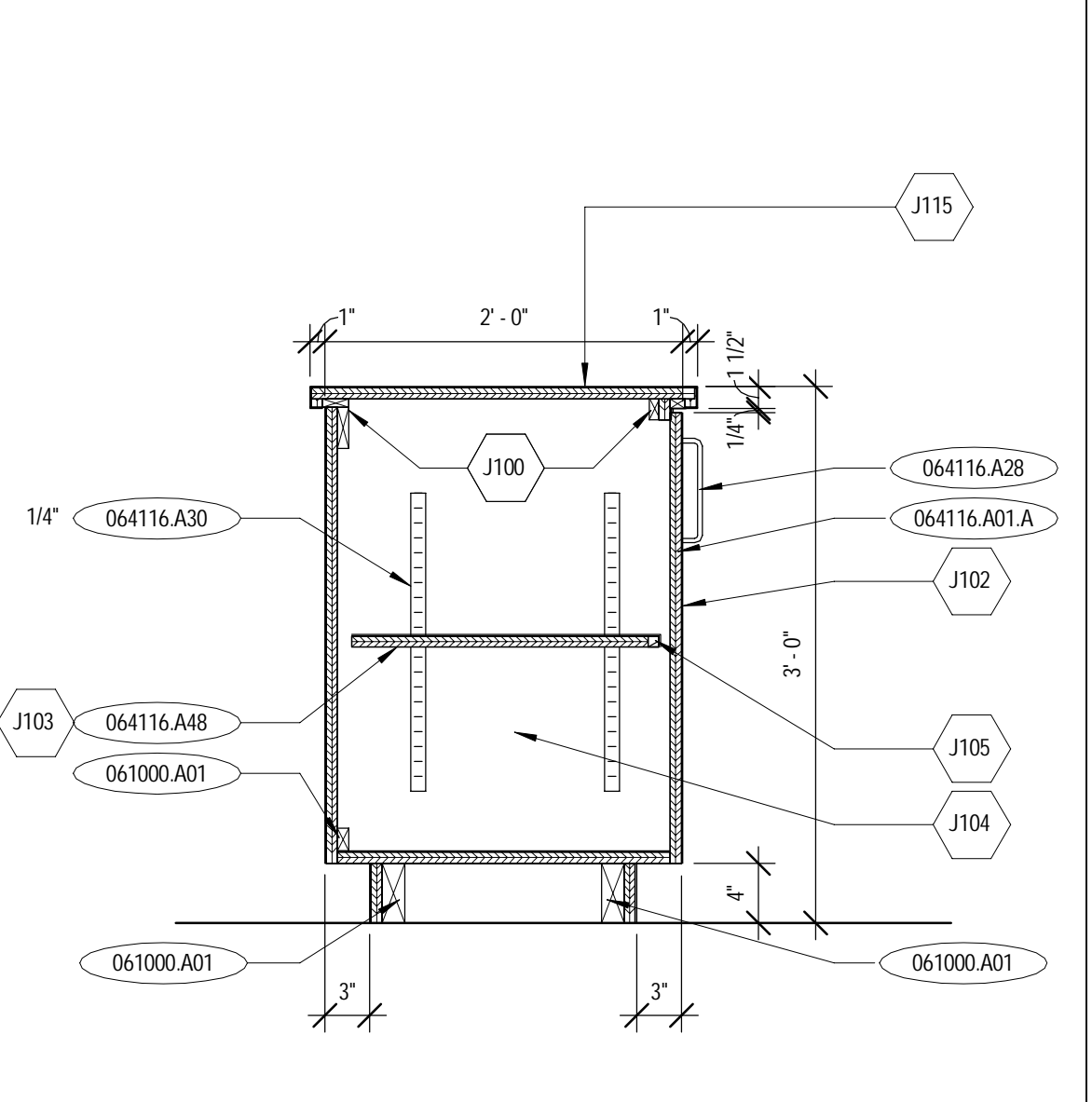
N5 WALL CABINET SECTION
 1" = 1'-0"



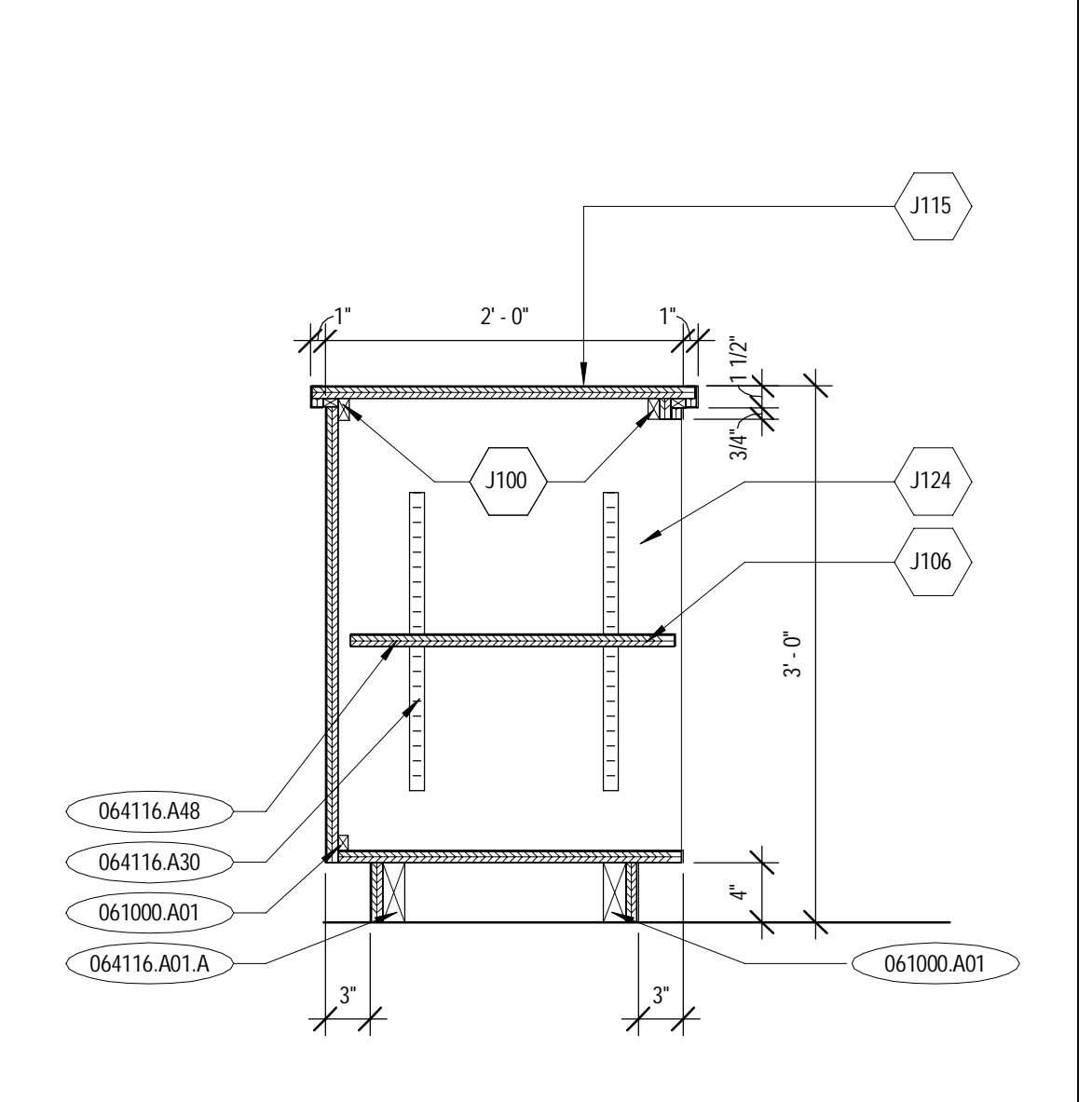
N9 WALL CABINET SECTION
 1" = 1'-0"



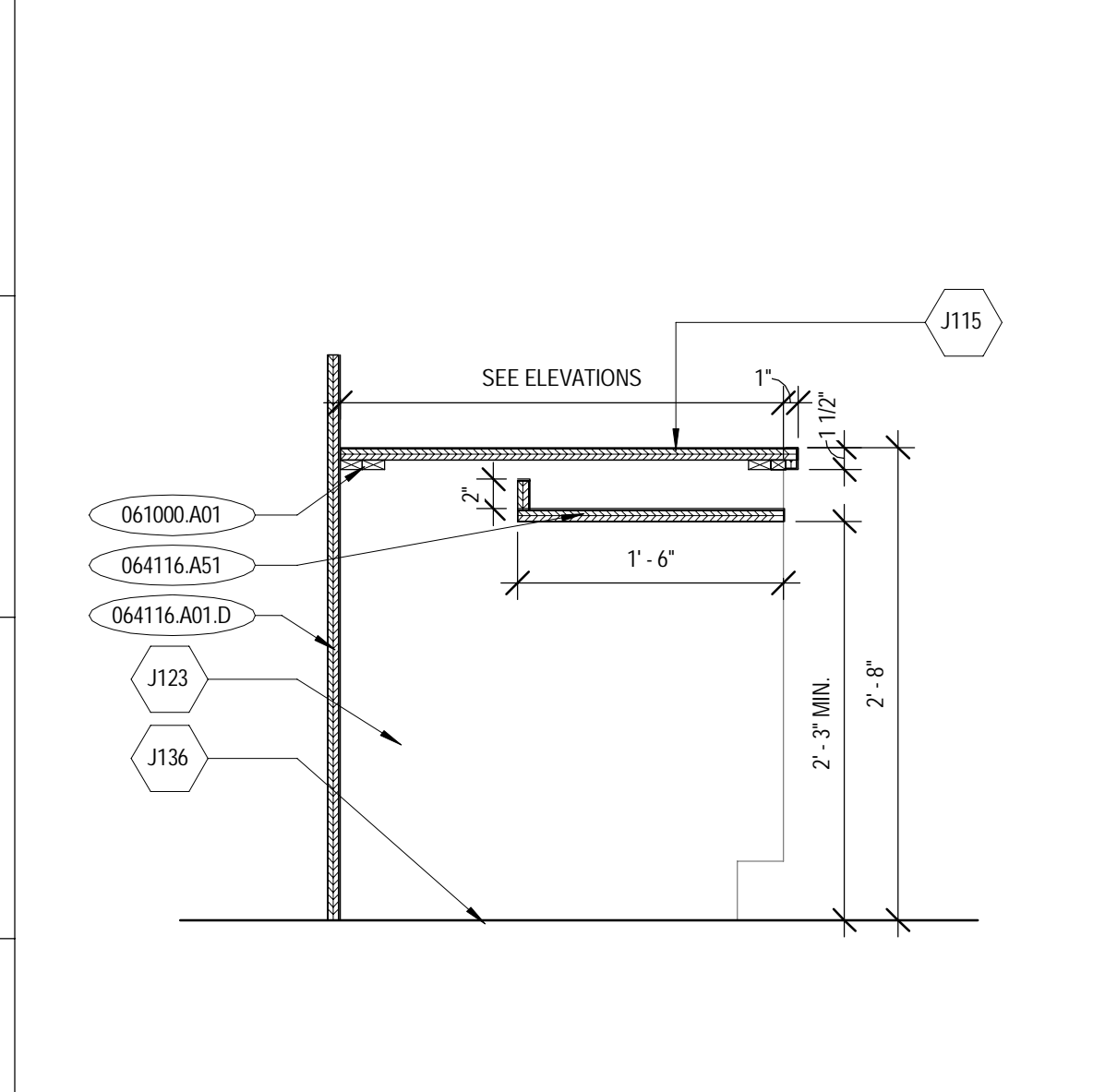
J1 BASE CABINET SECTION
 1" = 1'-0"



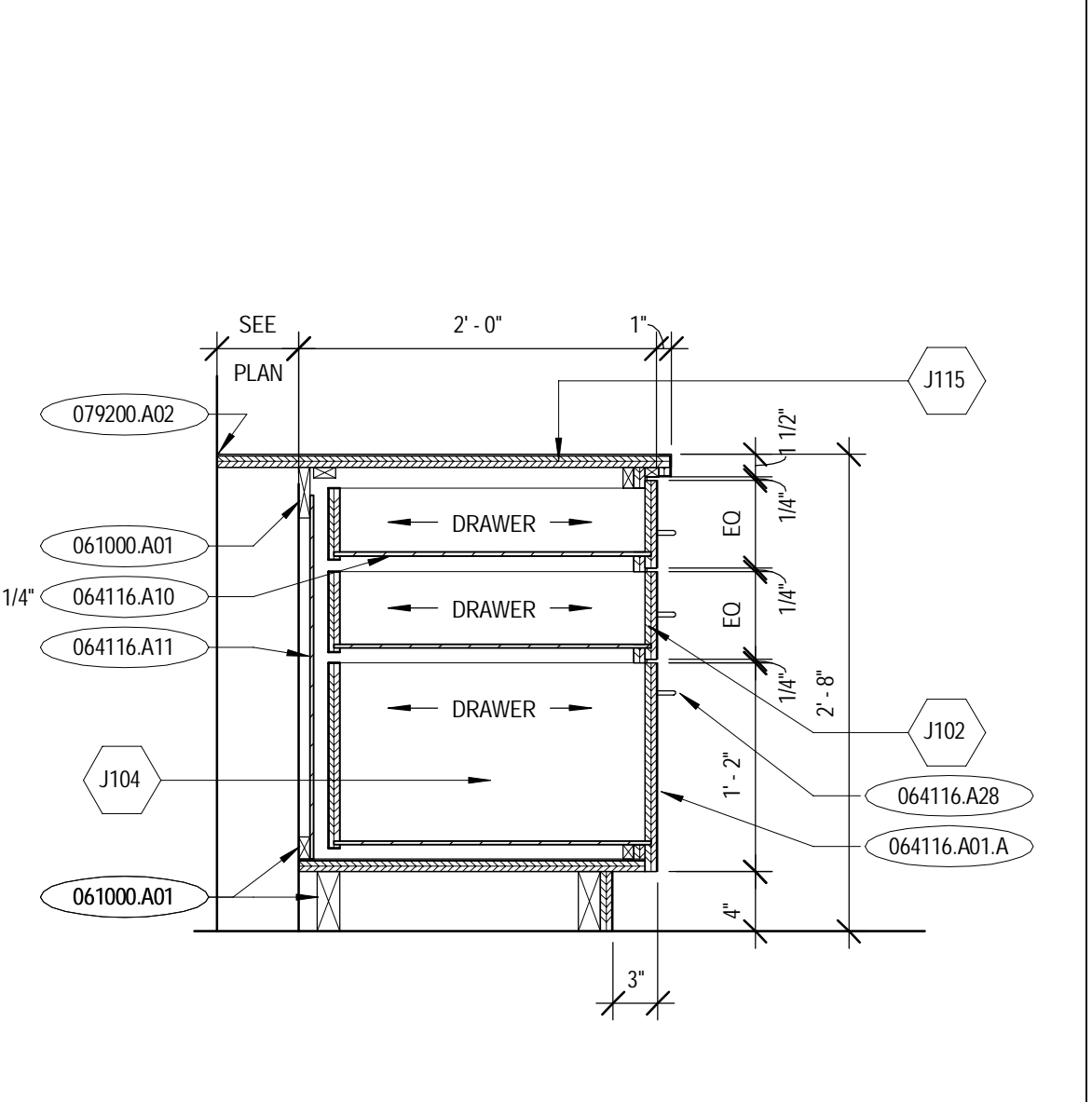
J5 BASE CABINET SECTION
 1" = 1'-0"



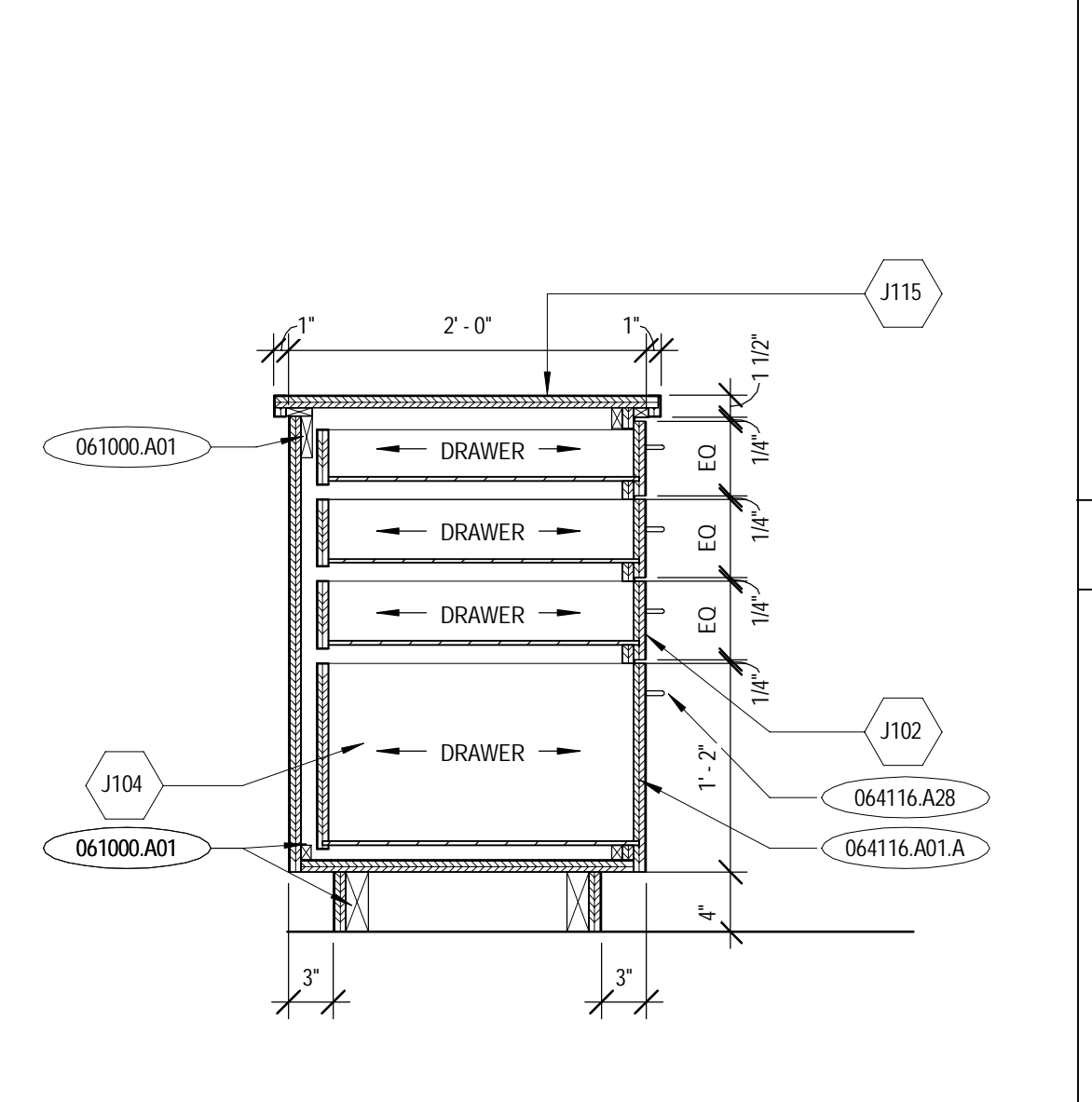
J9 BASE CABINET SECTION
 1" = 1'-0"



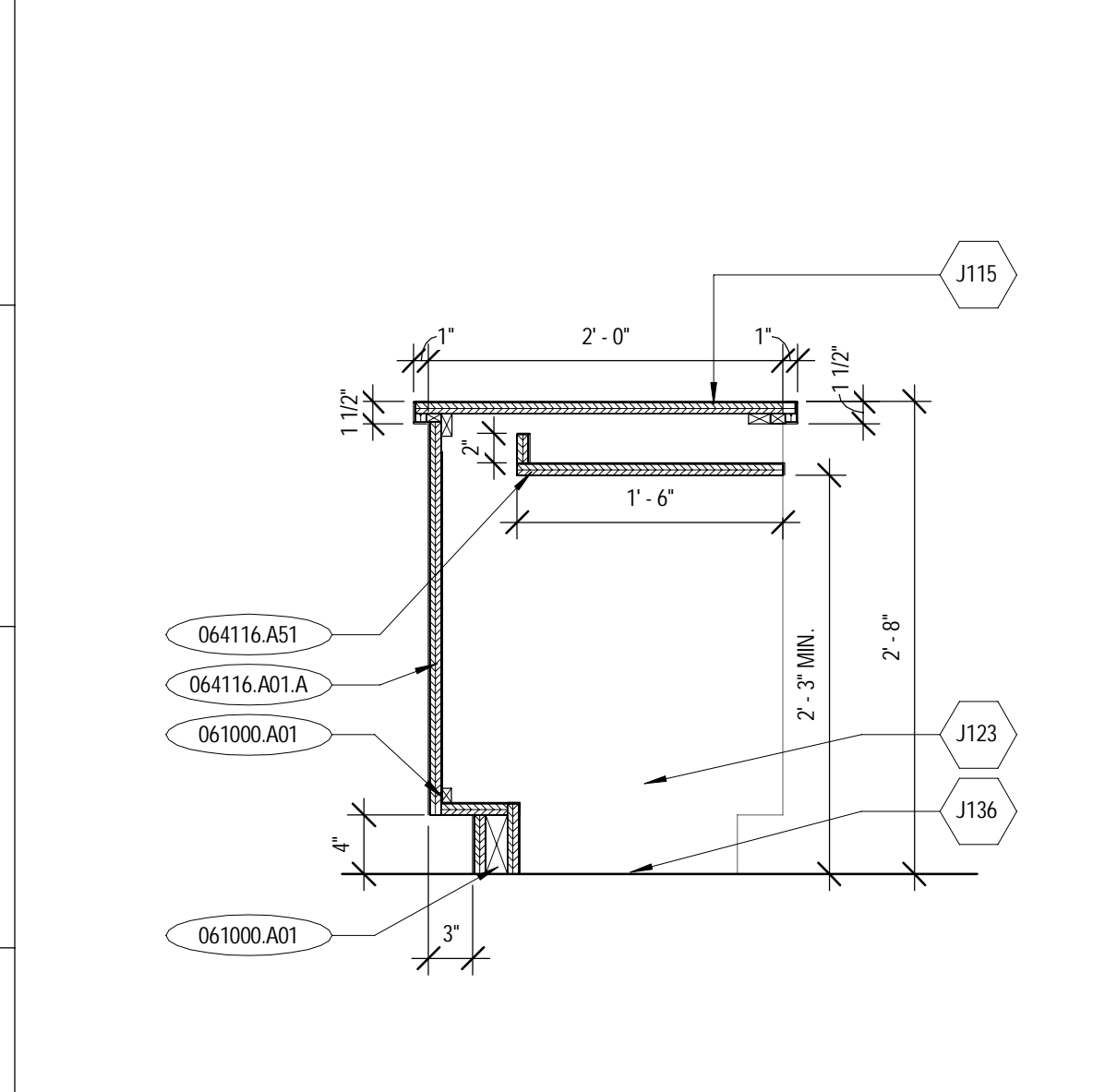
E1 BASE CABINET SECTION
 1" = 1'-0"



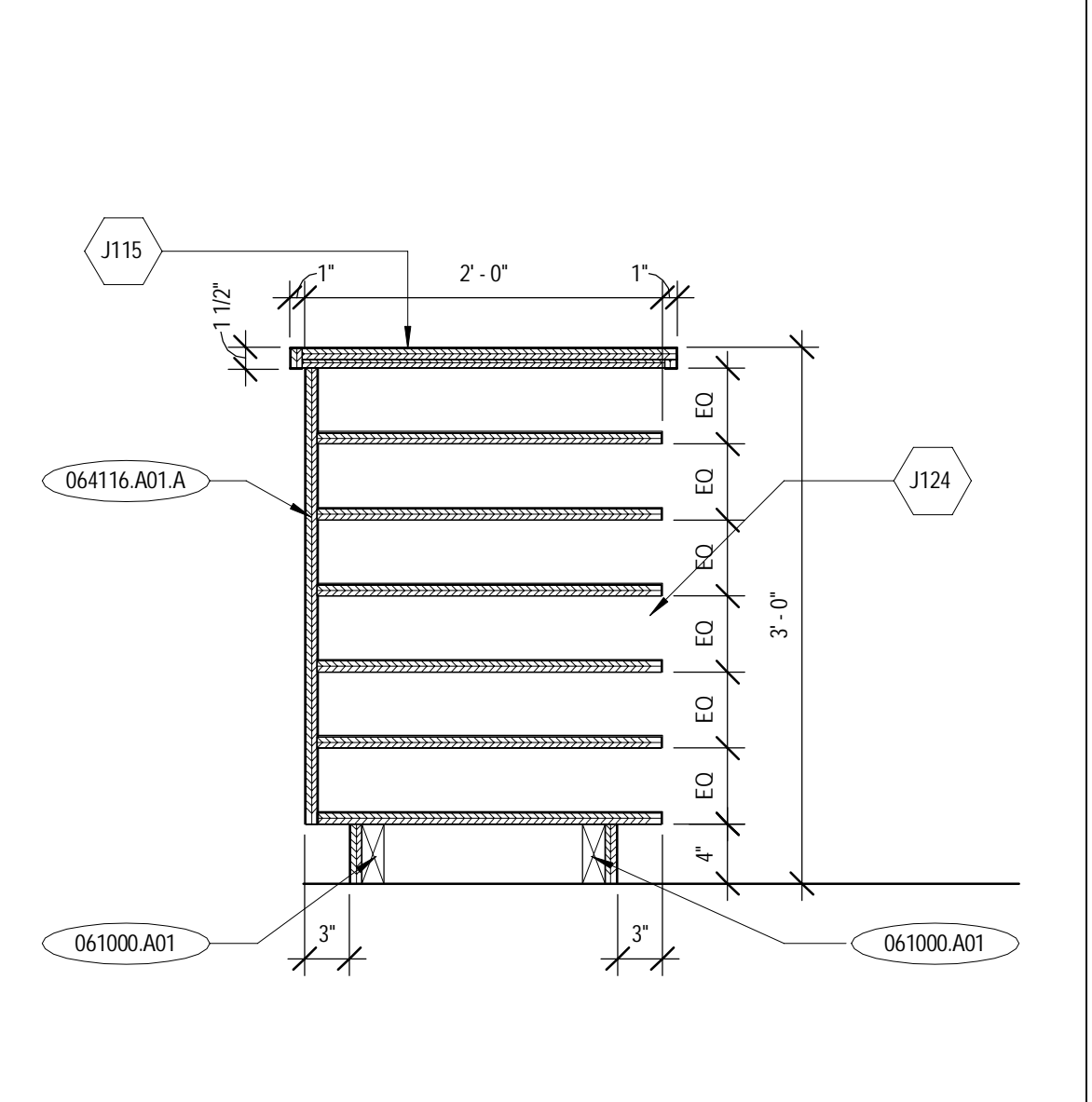
E5 BASE CABINET SECTION
 1" = 1'-0"



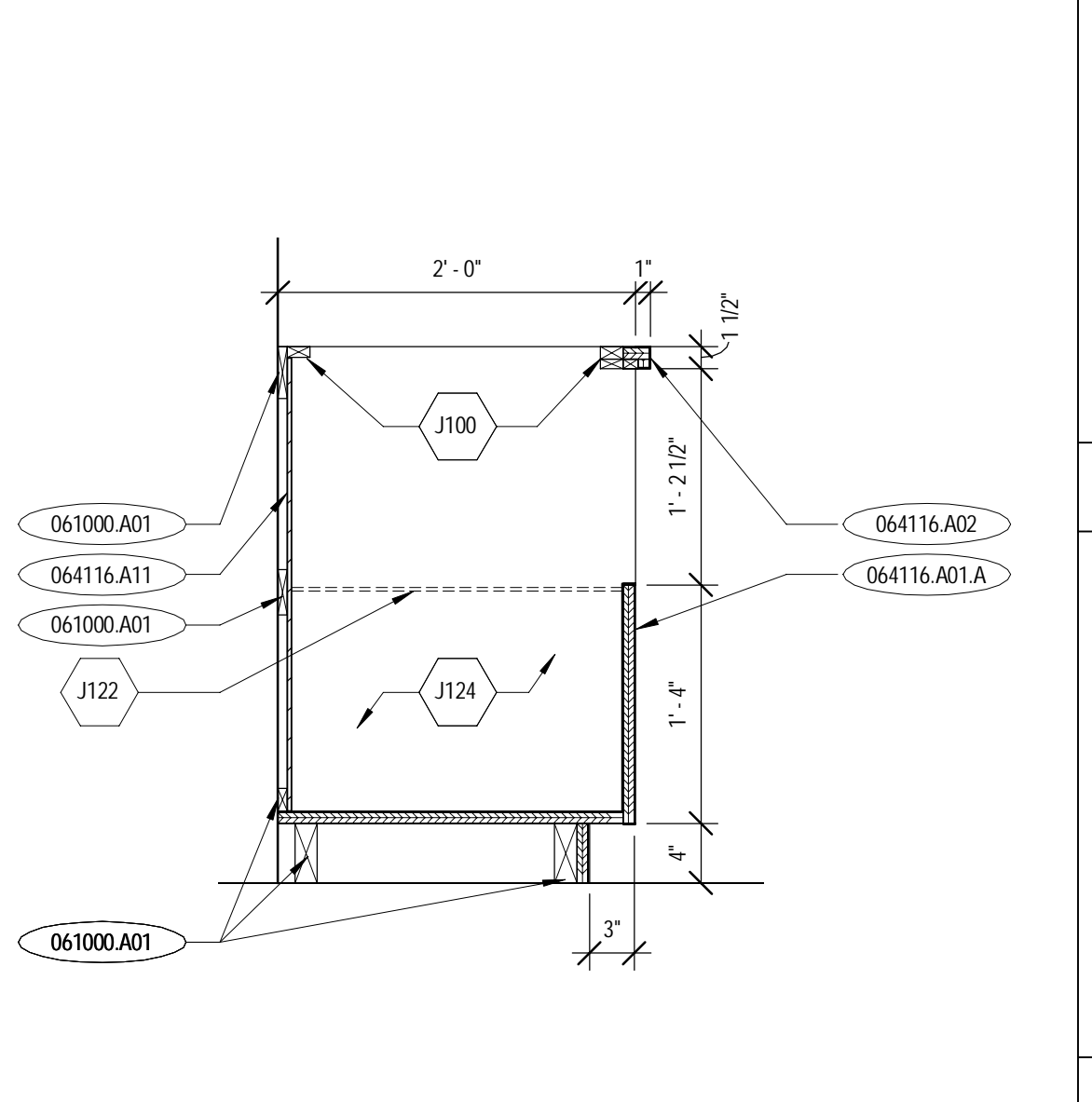
E9 BASE CABINET SECTION
 1" = 1'-0"



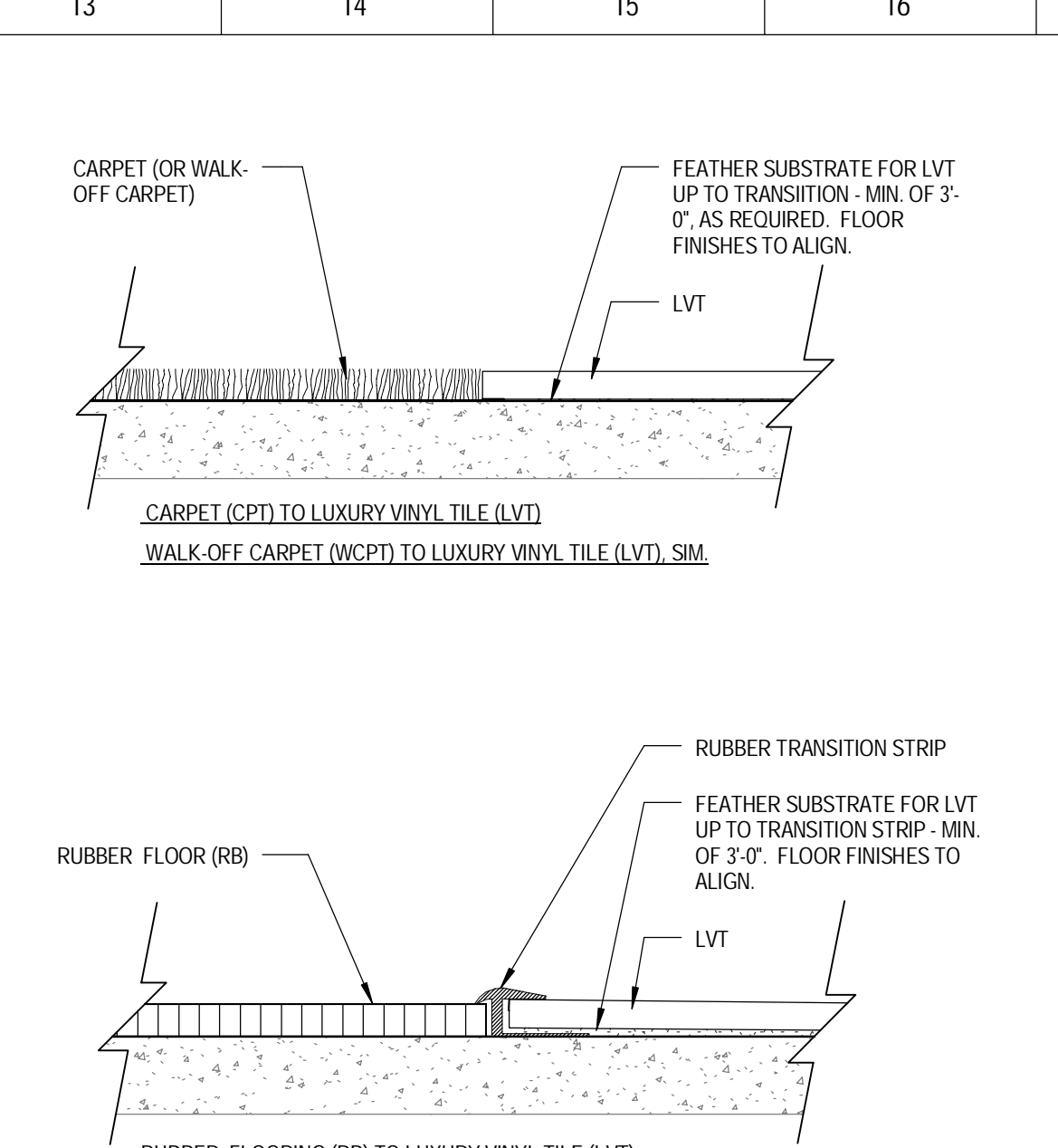
A1 BASE CABINET SECTION
 1" = 1'-0"



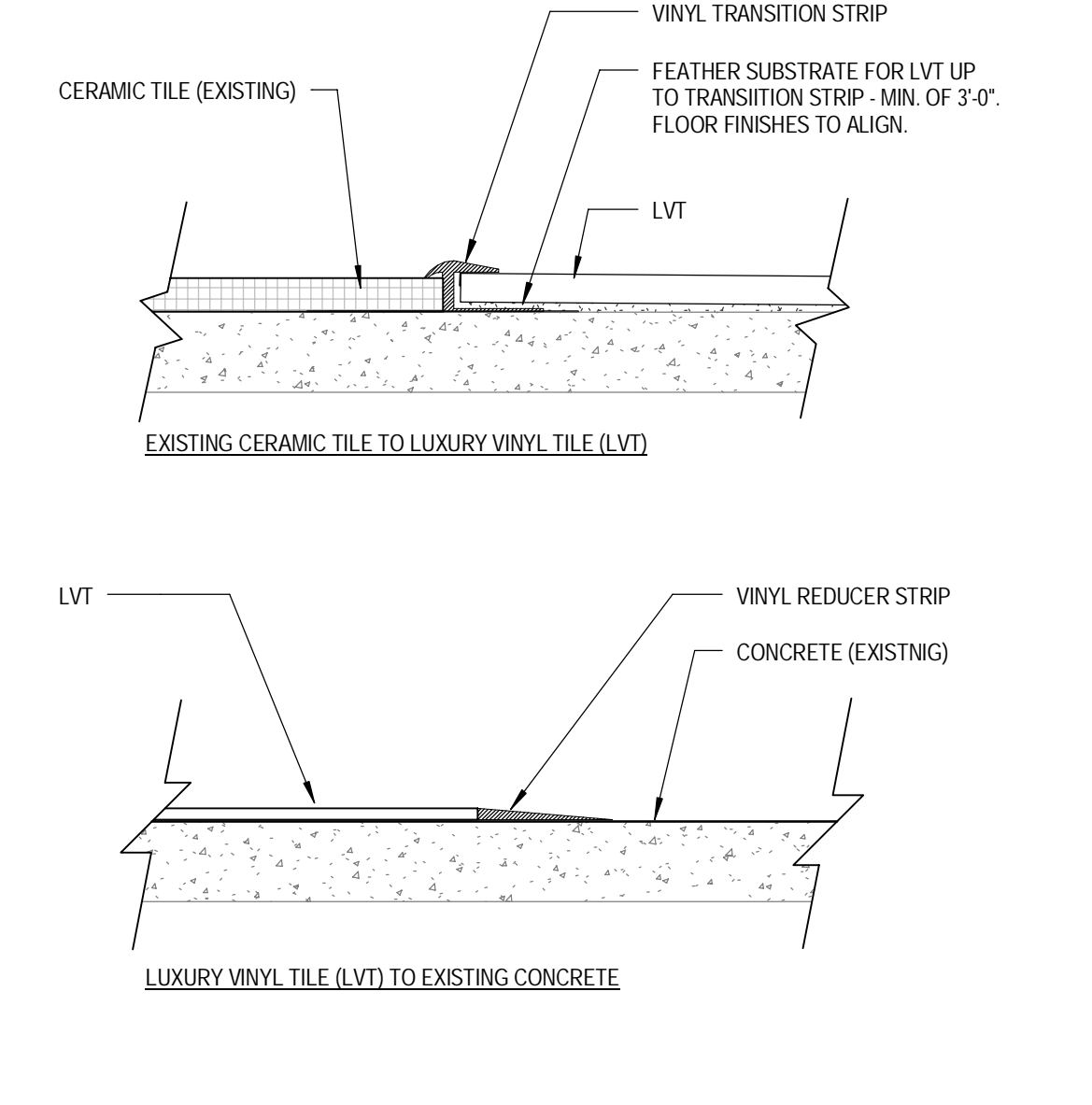
A5 STORAGE CABINET SECTION
 1" = 1'-0"



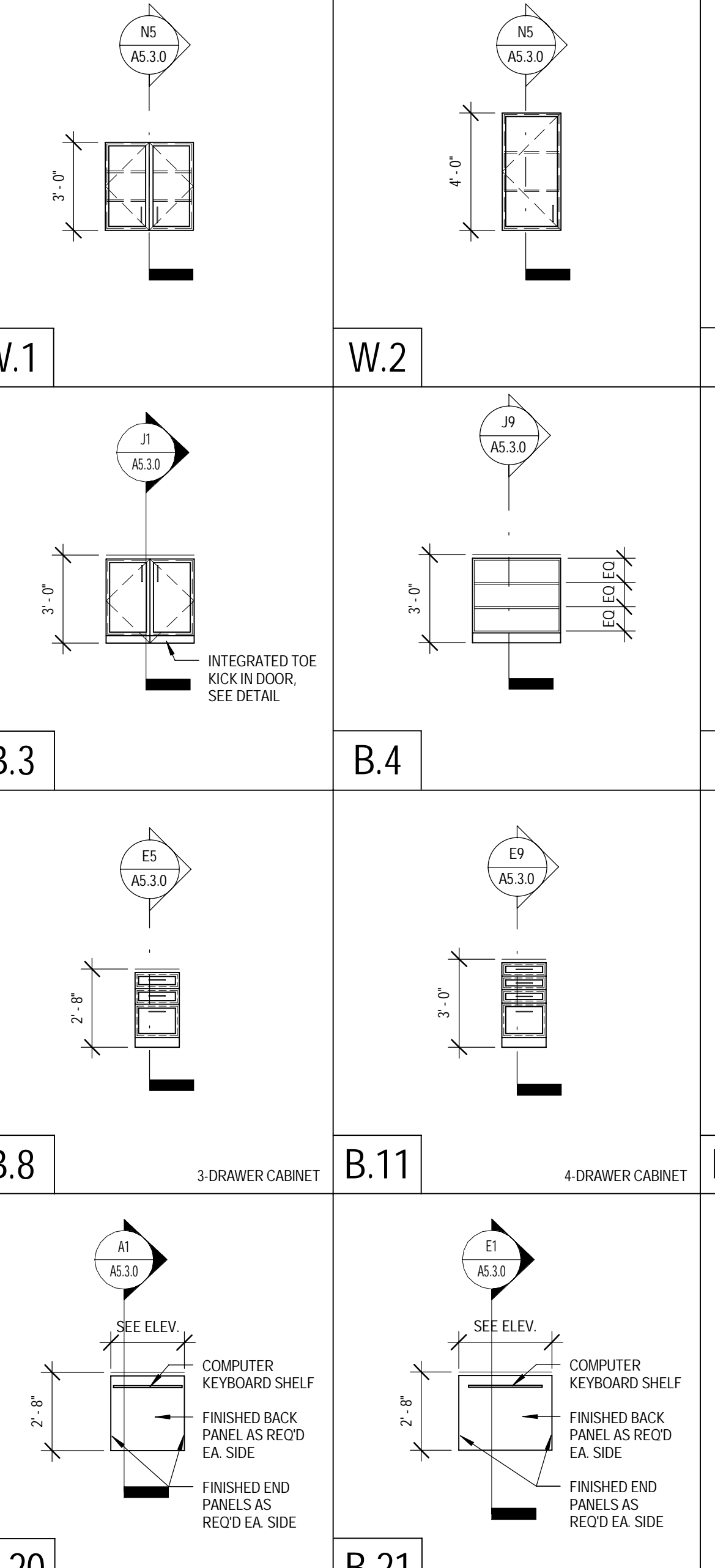
A9 BASE CABINET SECTION
 1" = 1'-0"



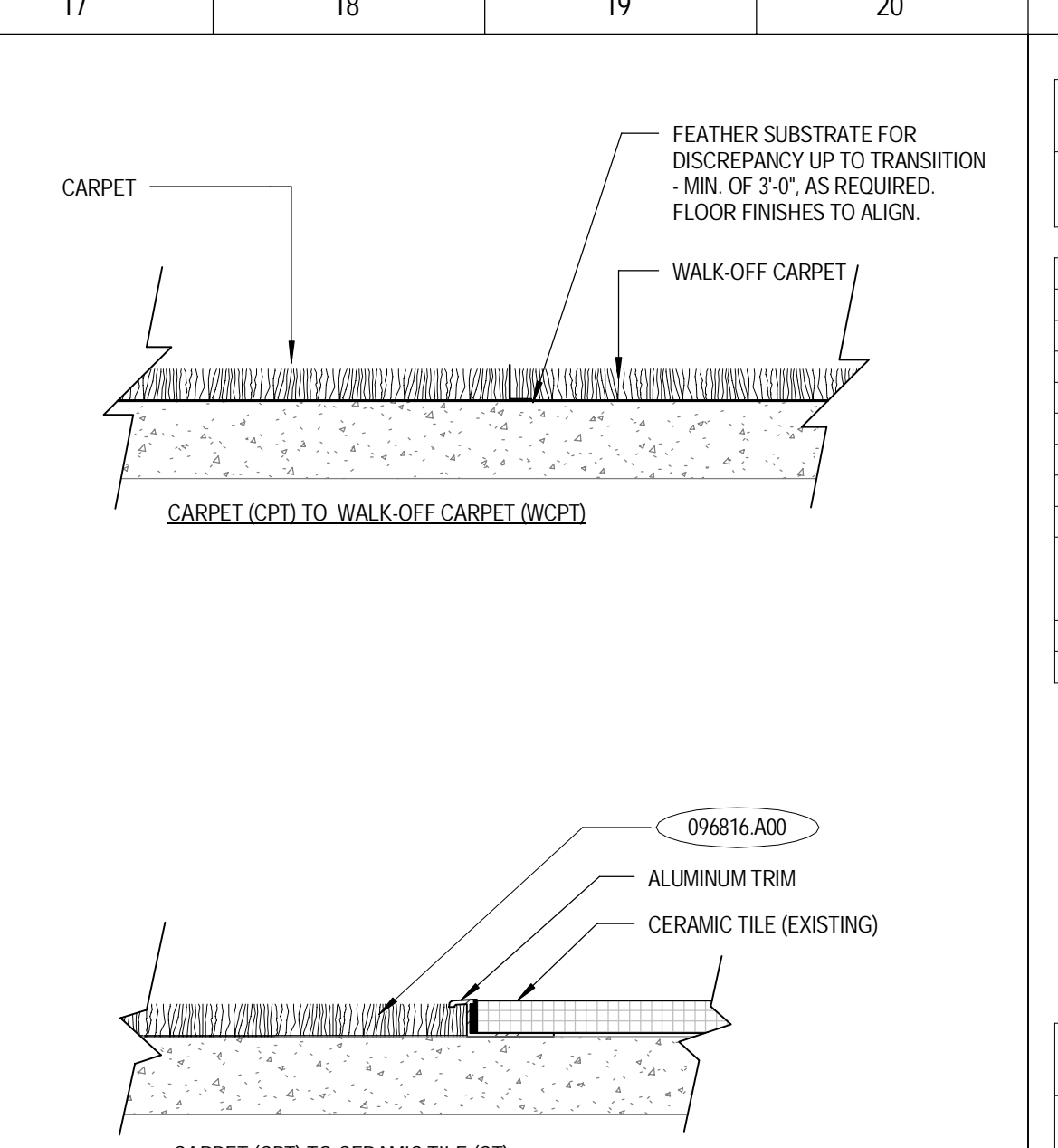
J13 TYPICAL FLOOR TRANSITION DETAILS
 6" = 1'-0"



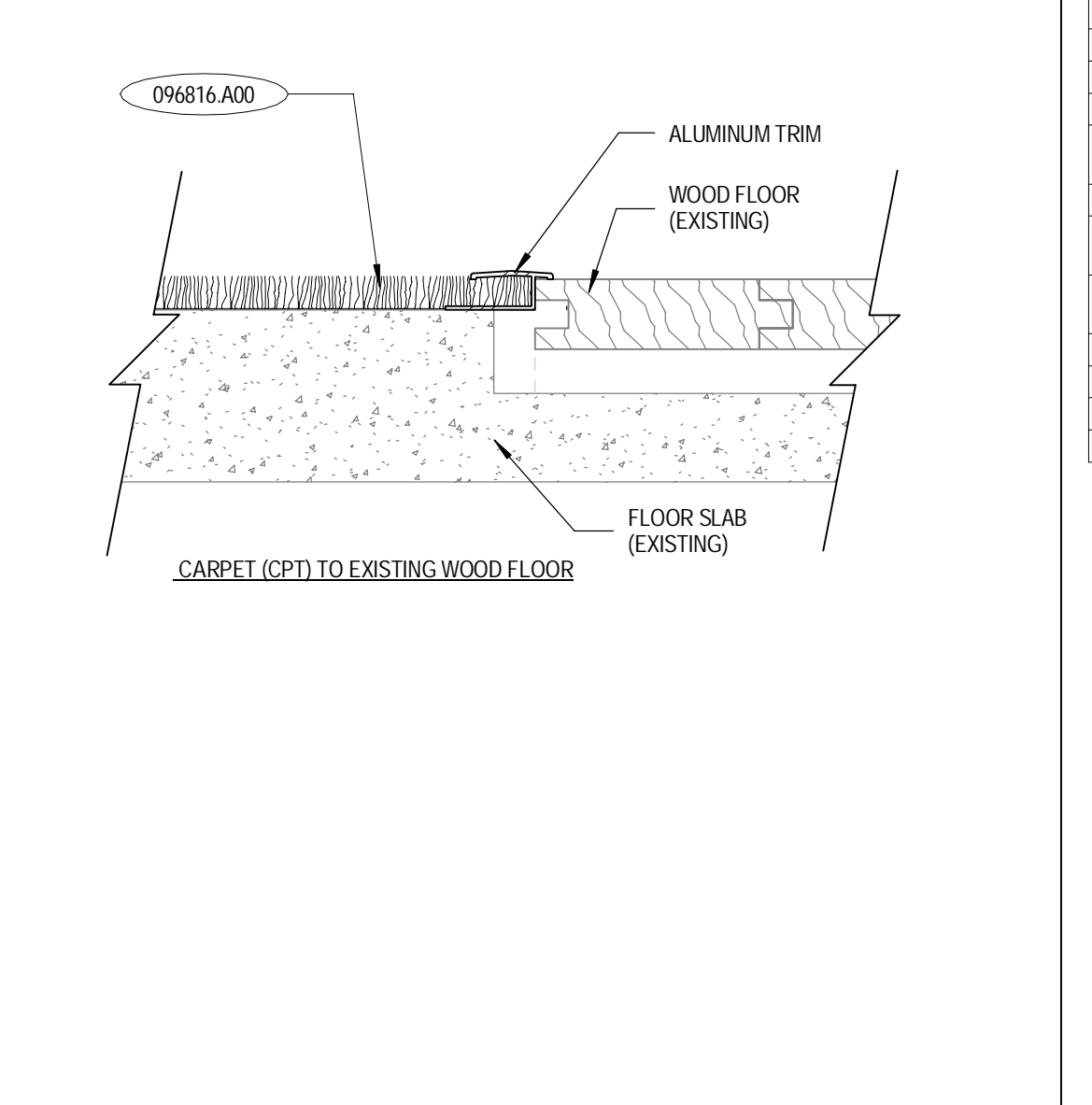
J13 TYPICAL FLOOR TRANSITION DETAILS
 6" = 1'-0"



A13 CASEWORK TYPES
 1" = 1'-0"



J13 TYPICAL FLOOR TRANSITION DETAILS
 6" = 1'-0"



J13 TYPICAL FLOOR TRANSITION DETAILS
 6" = 1'-0"

KEYNOTES - REFERENCE	
KEY NUMBER	DESCRIPTION
061000.A01	FRAMING WITH DIMENSION LUMBER
064116.A01.A	PLASTIC LAMINATE FACED ARCHITECTURAL BASE CABINET
064116.A01.D	PLASTIC LAMINATE FACED ARCHITECTURAL CASEWORK
064116.A02	PLASTIC LAMINATE FACED COUNTERTOP
064116.A10	DRAWER BOTTOM
064116.A11	HARDWOOD PLYWOOD
064116.A28	ROCKELBEI CONTEMPORARY / EXPRESSION, MODEL 8141192, FINISH 195 BRUSHED NICKEL
064116.A30	ADJUSTABLE SHELF STANDARDS AND SUPPORT
064116.A48	PLASTIC LAMINATE FACED SHELVING
064116.A51	PLASTIC LAMINATE FACED KEYBOARD TRAY FINISH ON ALL SIDES. PROVIDE DRAWER SLIDE, HARDWARE AND ALL ASSOCIATED TYPES. AS REQUIRED FOR SECURE INSTALLATION AND HEAVY USE. REFER TO CASEWORK DETAILS FOR DEPTH REQUIREMENTS.
079200.A02	SEALANT
096816.A00	CARPET

KEYNOTES - SHEET	
KEY NUMBER	DESCRIPTION
J100	1/2" FRAME
J102	3/4" PLYWOOD TOP, DOORS AND BOTTOM
J103	SHELF: 3/4" PLYWOOD W/ WHITE MELAMINE
J104	ALL INTERIOR SURFACES FINISHED W/ PT-1
J105	HARDWOOD EDGING
J106	SEE CABINET TYPE ELEVATIONS FOR SHELVING QUANTITY
J113	PROVIDE WOOD BLOCKING IN PARTITION AS REQ'D TO ANCHOR CABINET TO WALL
J115	COUNTERTOP AS SCHEDULED
J122	WOOD DOWELS, PAINTED TO MATCH PL-1. FASTEN TO MILLWORK AS REQUIRED FOR SECURE INSTALLATION. SPACE 2" APART. TYP.
J123	PROVIDE FINISHED END PANEL ON EACH SIDE. TYP.
J124	ALL EXPOSED INTERIOR VERTICAL SURFACES, HORIZONTAL SURFACES AND EDGING TO BE FINISHED WITH SCHEDULED PLASTIC LAMINATE
J132	INTEGRATED TOE KICK IN DOOR/MILLWORK DOOR. PROVIDE AND INSTALL PROPER BLOCKING AND HARDWARE AS REQUIRED FOR SECURE INSTALLATION
J133	MITERED CORNER, TYP.
J134	LAUNDRY CART BY OWNER
J135	PROVIDE FRAMING AS REQUIRED FOR SECURE INSTALLATION
J136	FINISHED FLOOR, AS INDICATED ON FINISH PLAN PLAN

NOTATIONS	
B.1-48 PL.#	PL.1
CODE 6 = COLOR CODE	(SEE ROOM FINISH SCHEDULE)
CODE 5 = SPECIAL CONDITION	A. MILLWORK CABINETRY TO BE PROVIDED WITH INTEGRAL KEY LOCK MECHANISM
	B. SLIDE OUT COMPUTER KEYBOARD SHELF
	C. 30" DEEP BASE CABINET
	D. CUSTOM CABINET FOOTPRINT - SEE PLAN
	E. CUSTOM CURVED CABINET - SEE PLAN
CODE 4 = MATERIAL LEGEND	PL. PLASTIC LAMINATE
	WD. WOOD
	M. METAL
CODE 3 = DIMENSION WIDTH	
CODE 2 = TYPE WITHIN GROUP	
CODE 1 = CABINET TYPE	B. BASE CABINET
	W. WALL HUNG CABINET

J21 NOTATIONS

CASEWORK CODE	
12" = 1'-0"	
GENERAL CASEWORK NOTES	
1. THE CASEWORK TYPES SHOWN ON THIS SHEET REPRESENT THE STANDARD TYPES WHICH FREQUENTLY OCCUR IN PROJECTS OF THIS NATURE. NOT ALL TYPES WILL BE USED	
2. THE CASEWORK CODE SYMBOLS ARE SHOWN ON THE FLOOR PLANS OR ELEVATIONS	
3. FIELD VERIFY ALL DIMENSIONS PRIOR TO FABRICATION	
4. VERIFY ALL LOCATIONS, MOUNTING HEIGHTS AND CLEARANCES. NOTIFY ARCHITECT OF DISCREPANCIES PRIOR TO FABRICATION	
5. COORDINATE WORK WITH OTHER TRADES INTERFACING WITH CASEWORK AND MILLWORK, INCLUDING PLUMBING, MECHANICAL AND ELECTRICAL SYSTEMS	
6. FOR SPECIAL CASEWORK COMPONENTS SEE ELEVATIONS AND PLANS	
7. PROVIDE ALL REQUIRED AND NECESSARY BACKING, STRUCTURAL SUPPORT AND ANCHORS. COORDINATE ANY WALL REINFORCEMENT WITH PROPER TRADE PRIOR TO WALL CONSTRUCTION	
8. AT ALL EXPOSED SURFACES PROVIDE END UNITS WITH EXPOSED SIDES FINISHED TO MATCH OTHER EXPOSED FINISHES ON ADJACENT UNITS	
9. IN CERTAIN CONDITIONS, CASEWORK CODE FOR DOUBLE DOOR CABINETS ARE USED TO INDICATE SINGLE DOOR CONFIGURATION. REFER TO ELEVATIONS FOR QUANTITY OF CABINET DOORS REQUIRED. TYPICAL MODULE GUIDELINES: MODULE WIDTH VARIES IN INCREMENTS OF 78". CASEWORK MODULE SMALLER THAN 24" ARE SINGLE MODULES. CASEWORK MODULES WIDER THAN 24" ARE DOUBLE MODULES	
10. PROVIDE ALL FILLERS, SCRIBES, TRIMS, FINISHED ENDS, FINISHED BACKS, WORK SURFACES, BACKSPASHES, AND CUTOUTS REQUIRED FOR FINISHED INSTALLATION	
11. PROVIDE SHELVES WITH FINISHED SURFACES ON ALL SIDES	
12. PROVIDE ADJUSTABLE SHELVES WITH 4 SLIPS EACH MINIMUM	
13. PROVIDE BACKSPASH COUNTERTOP, CONTINUOUS SHELVING AND CABINET FLOOR BASE WHICH RUN CONTINUOUS ACROSS MODULES. MINIMIZE EXPOSED JOINTS IN ALL CONTINUOUS SURFACES	
14. UNLESS OTHERWISE NOTED PROVIDE CABINETS MADE OF 3/4" THICK FIRE RETARDANT TREATED PLYWOOD WITH PLASTIC LAMINATE FINISH ON BOTH SIDES	

D21 CASEWORK CODE

GENERAL CASEWORK NOTES	
1. THE CASEWORK TYPES SHOWN ON THIS SHEET REPRESENT THE STANDARD TYPES WHICH FREQUENTLY OCCUR IN PROJECTS OF THIS NATURE. NOT ALL TYPES WILL BE USED	
2. THE CASEWORK CODE SYMBOLS ARE SHOWN ON THE FLOOR PLANS OR ELEVATIONS	
3. FIELD VERIFY ALL DIMENSIONS PRIOR TO FABRICATION	
4. VERIFY ALL LOCATIONS, MOUNTING HEIGHTS AND CLEARANCES. NOTIFY ARCHITECT OF DISCREPANCIES PRIOR TO FABRICATION	
5. COORDINATE WORK WITH OTHER TRADES INTERFACING WITH CASEWORK AND MILLWORK, INCLUDING PLUMBING, MECHANICAL AND ELECTRICAL SYSTEMS	
6. FOR SPECIAL CASEWORK COMPONENTS SEE ELEVATIONS AND PLANS	
7. PROVIDE ALL REQUIRED AND NECESSARY BACKING, STRUCTURAL SUPPORT AND ANCHORS. COORDINATE ANY WALL REINFORCEMENT WITH PROPER TRADE PRIOR TO WALL CONSTRUCTION	
8. AT ALL EXPOSED SURFACES PROVIDE END UNITS WITH EXPOSED SIDES FINISHED TO MATCH OTHER EXPOSED FINISHES ON ADJACENT UNITS	
9. IN CERTAIN CONDITIONS, CASEWORK CODE FOR DOUBLE DOOR CABINETS ARE USED TO INDICATE SINGLE DOOR CONFIGURATION. REFER TO ELEVATIONS FOR QUANTITY OF CABINET DOORS REQUIRED. TYPICAL MODULE GUIDELINES: MODULE WIDTH VARIES IN INCREMENTS OF 78". CASEWORK MODULE SMALLER THAN 24" ARE SINGLE MODULES. CASEWORK MODULES WIDER THAN 24" ARE DOUBLE MODULES	
10. PROVIDE ALL FILLERS, SCRIBES, TRIMS, FINISHED ENDS, FINISHED BACKS, WORK SURFACES, BACKSPASHES, AND CUTOUTS REQUIRED FOR FINISHED INSTALLATION	
11. PROVIDE SHELVES WITH FINISHED SURFACES ON ALL SIDES	
12. PROVIDE ADJUSTABLE SHELVES WITH 4 SLIPS EACH MINIMUM	
13. PROVIDE BACKSPASH COUNTERTOP, CONTINUOUS SHELVING AND CABINET FLOOR BASE WHICH RUN CONTINUOUS ACROSS MODULES. MINIMIZE EXPOSED JOINTS IN ALL CONTINUOUS SURFACES	
14. UNLESS OTHERWISE NOTED PROVIDE CABINETS MADE OF 3/4" THICK FIRE RETARDANT TREATED PLYWOOD WITH PLASTIC LAMINATE FINISH ON BOTH SIDES	

A21 GENERAL CASEWORK NOTES

ISSUANCE	
NO.	DATE
	06.02.15
	06.26.15

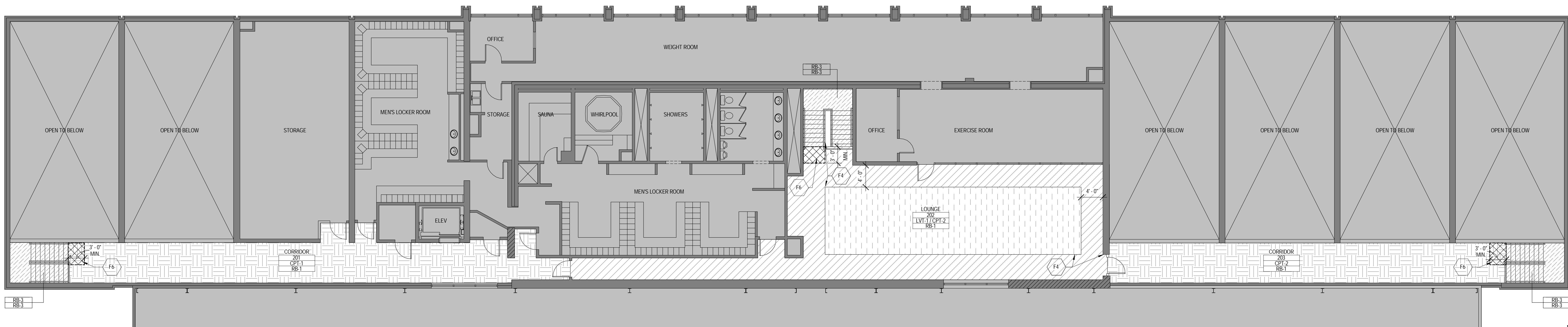
FGM ARCHITECTS
 CHICAGO
 OAK BROOK
 OF FALLON

PROFESSIONAL SEAL
 EXPIRATION DATE:

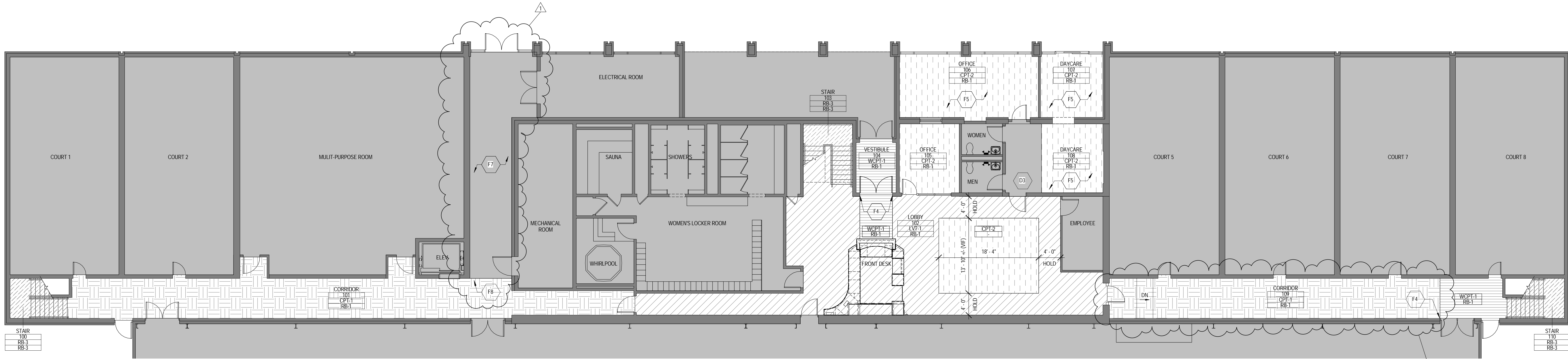
DATE	DRAWN	CHECKED	APPROVED	PROFESSIONAL DESIGN FIRM
06.02.15	MK	RP	JD	FGM ARCHITECTS, INC.

FOREST VIEW RACQUET & FITNESS CLUB RENOVATION
 ARLINGTON HEIGHTS PARK DISTRICT
 800 Falcon Drive
 Arlington Heights, Illinois 60005

SHEET NO.
A5.3.0
 JOB NO. 15-2037.01
 © 2015 FGM Architects Inc.



L1 SECOND FLOOR FINISH PLAN
1/8" = 1'-0"

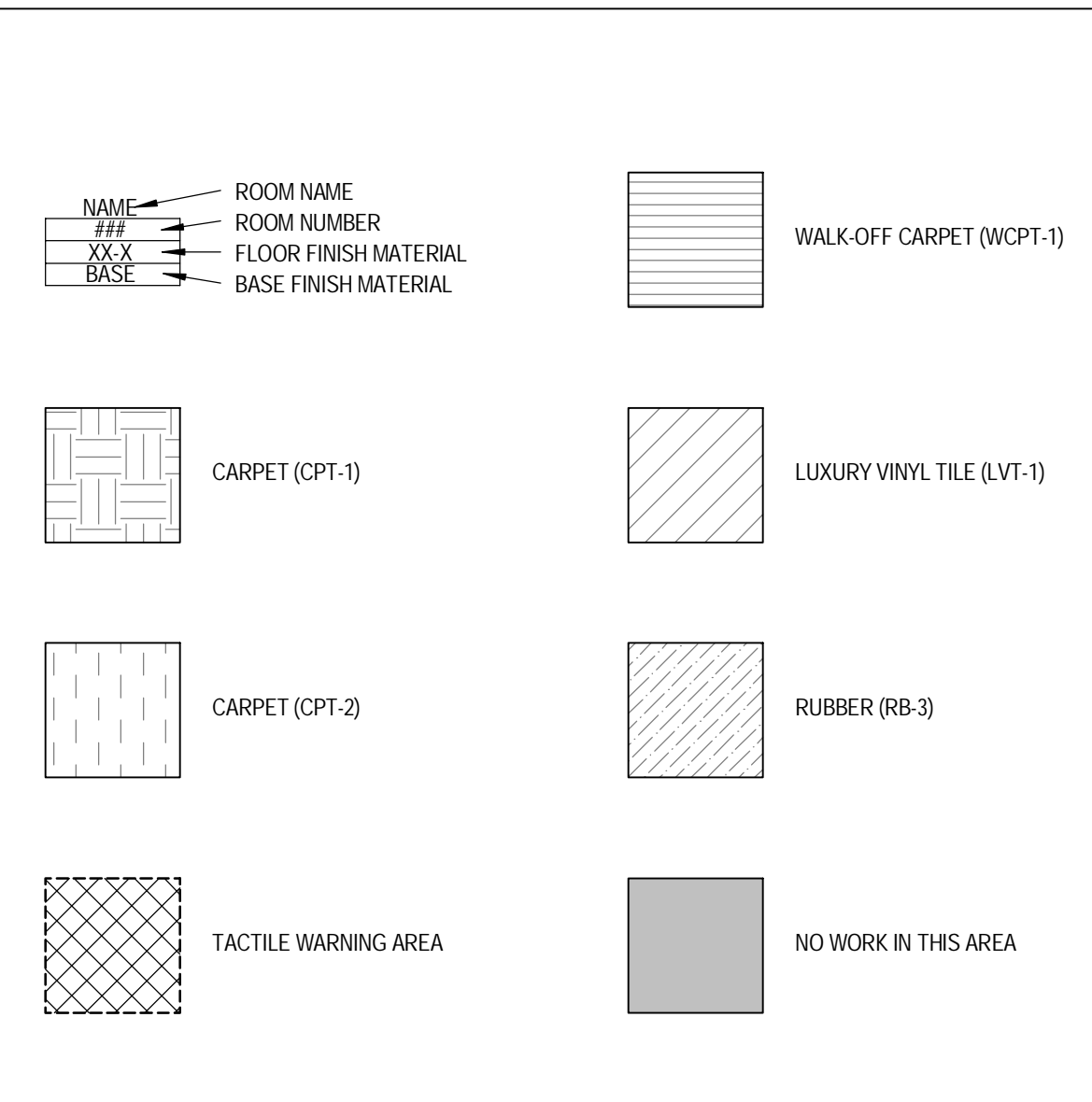


E1 FIRST FLOOR FINISH PLAN
1/8" = 1'-0"

Code	Material/Finish	Description
W-CPT-1	Manufacture - Interface Size - 24" x 24" Style - Quarter Turn Color - 60902/2504 Color - 60909 - Base Grey	
CPT-1	Manufacture - Masland Modular Size - 24" x 24" Style - Quarter Turn Color - 7881 Cha Cha Color - 88105 Count	
CPT-2	Manufacture - Masland Modular Size - 24" x 24" Style - Quarter Turn Color - 7880 Swing Color - 88105 Count	
LVT-1	Manufacture - Mohawk Group Series C2009 148 Arrow Mill Size - 9" x 9"	
WC-1	Manufacture - Chelwich (wall textiles) Weave - Rib Weave Color - Lead	
P-Lam-1	Manufacture - Wilsonart Vertical Laminate Color - Colombian Walnut - 7943k Finish - Standard Finish 60	
P-Lam-2 (Base Bid)	Manufacture - Wilsonart Horizontal Laminate Color - Paster Mesh Finish - Standard Finish 60	
PT-1	Manufacture - Benjamin Moore Color - Bittersweet Chocolate - 2114-10	
SS-1 (Add Alt.)	Manufacture - Avonite Style - Studio Collection Color - Autumn Wheat	
RB-1 (Base Bid)	Manufacture - Johnsonite 4" Straight Base Color - 31 Zephyr	
RB-2 (Add Alt.)	Manufacture - Johnsonite Millwork Wall Base Style - Ambassador Color - 31 Zephyr	
RB-3	Rubber Stair Treads, Riser and Tactile Warning Manufacture - Johnsonite Color - 283 Toast Texture - Hammered (riser to be smooth)	
Schluter Systems	BARA-RWL Color - GM - Metallic Gray Size - 915"	
Hardware	Manufacture - Richelieu Contemporary / Expression Model - 614192 Finish - 195 brushed Nickel	

ROOM SCHEDULE - FINISH														
ROOM NUMBER	ROOM NAME	FLOOR FINISH	BASE FINISH	NORTH WALL	EAST WALL	WEST WALL	SOUTH WALL	CEILING	FINISH					REMARKS
Level 1														
100	STAIR	RB-3	RB-1	EX	EX	EX	EX	EX	EX	EX	EX	EX	EX	
101	CORRIDOR	CPT-1	RB-1	EX	EX	EX	EX	EX	EX	EX	EX	EX	EX	
102	LOBBY	LVT-1 / CPT-2	RB-1	EX	EX	EX	EX	EX	EX	EX	EX	EX	EX	1
103	STAIR	RB-3	RB-1	EX	EX	EX	EX	EX	EX	EX	EX	EX	EX	
104	VESTIBULE	W-CPT-1	RB-1	EX	EX	EX	EX	EX	EX	EX	EX	EX	EX	
105	OFFICE	CPT-2	RB-1	EX	EX	EX	EX	EX	EX	EX	EX	EX	EX	
106	OFFICE	CPT-2	RB-1	EX	EX	EX	EX	EX	EX	EX	EX	EX	EX	2
107	DAYCARE	CPT-2	RB-1	EX	EX	EX	EX	EX	EX	EX	EX	EX	EX	2
108	DAYCARE	CPT-2	RB-1	EX	EX	EX	EX	EX	EX	EX	EX	EX	EX	2
109	CORRIDOR	CPT-1	RB-1	EX	EX	EX	EX	EX	EX	EX	EX	EX	EX	
110	STAIR	RB-3	RB-1	EX	EX	EX	EX	EX	EX	EX	EX	EX	EX	
Level 2														
201	CORRIDOR	CPT-1	RB-1	EX	EX	EX	EX	EX	EX	EX	EX	EX	EX	
202	LOUNGE	LVT-1 / CPT-2	RB-1	EX	EX	EX	EX	EX	EX	EX	EX	EX	EX	1
203	CORRIDOR	CPT-1	RB-1	EX	EX	EX	EX	EX	EX	EX	EX	EX	EX	

ROOM FINISH ABBREVIATIONS		ROOM FINISH SCHEDULE REMARKS	
CPT-#	CARPET	1	PROVIDE FLOOR PREP REQUIRED BETWEEN W-CPT-1, CPT-1 AND LVT-1 FOR ADA COMPLIANT TRANSITIONS.
EXP-#	EXPOSED CONSTRUCTION	2	ALTERNATE: PROVIDE AND INSTALL FLOOR FINISH AND BASE FINISH AS INDICATED ON THE FLOOR FINISH PLAN.
LVT-#	LUXURY VINYL TILE		
PT-#	PAINT		
RB-#	RUBBER		
SC-#	SEALED CONCRETE		
W-CPT-#	WALK-OFF CARPET		



- GENERAL ROOM FINISH SCHEDULE NOTES**
- FOR FINISH MATERIAL WHEN MORE THAN ONE MATERIAL OCCURS THE FINISH IS INDICATED THUS "1"
 - PROVIDE FLOOR PREP REQUIRED AT ALL FLOORING CHANGES
 - PROVIDE TRANSITIONS REQUIRED AT ALL LOCATIONS WHERE FLOORING MATERIAL CHANGES. TRANSITIONS TO COMPLY WITH ADA REQUIREMENTS.
 - UNLESS OTHERWISE NOTED, PROVIDE 4" HIGH RUBBER BASE.
 - ALTERNATE: PROVIDE BASE TYPE RB-2 IN LIEU OF BASE TYPE RB-1.
 - ALTERNATE: PROVIDE COUNTERTOPS IN SOLID SURFACE TYPE SS-1 LIEU OF PLASTIC LAMINATE TYPE PL-2.
 - FLOORING FINISH TO CONTINUE UNDER MILLWORK AND CASEWORK, TYPICAL.

C21 GENERAL FLOOR PLAN NOTES

KEYNOTES - SHEET	
KEY NUMBER	DESCRIPTION
D3	EXISTING TILE FLOORING TO REMAIN.
F4	ALTERNATE: PROVIDE FLOOR FINISH AND BASE FINISH AS SHOWN. REFER TO ROOM FINISH SCHEDULE.
F5	ALTERNATE: PROVIDE FLOOR FINISH AND BASE FINISH AS SHOWN. REFER TO ROOM FINISH SCHEDULE.
F6	PROVIDE TACTILE WARNING AREA AT TOP OF STAIR. COMPLY WITH REQUIREMENTS OF ILLINOIS ACCESSIBILITY CODE. TYP. DEPT OF TACTILE WARNING AREA TO BE 3'-0" MINIMUM AS INDICATED ON PLANS. FINISH TO BE RB-3 AS INDICATED ON INTERIOR FINISHES LEGEND.
F7	EXISTING FLOORING TO REMAIN.
F8	PROVIDE TRANSITION STRIP REQUIRED BETWEEN EXISTING FLOOR FINISH SCHEDULED TO REMAIN AND NEW FLOOR FINISH.

A1 INTERIOR FINISHES LEGEND
1/8" = 1'-0"

A9 ROOM FINISH SCHEDULE

A17 FLOOR FINISH LEGEND

A21 NOTATIONS

ISSUANCE NO.	DATE	DESCRIPTION
	06.02.15	ISSUED FOR BID
	06.26.15	ADDENDUM 1

FGM ARCHITECTS
CHICAGO
OAK BROOK
OF FALLOON

DATE	DRAWN	CHECKED	APPROVED	PROFESSIONAL DESIGN FIRM
06.02.15	MMK	RP	JD	IL # 164-00050

FOREST VIEW RACQUET & FITNESS CLUB RENOVATION
ARLINGTON HEIGHTS PARK DISTRICT
800 Falcon Drive
Arlington Heights, Illinois 60005

SHEET NO. **A8.1.0**
JOB NO. 15-2037.01
© 2015 FGM Architects Inc.