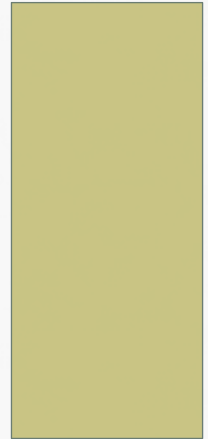




EAB

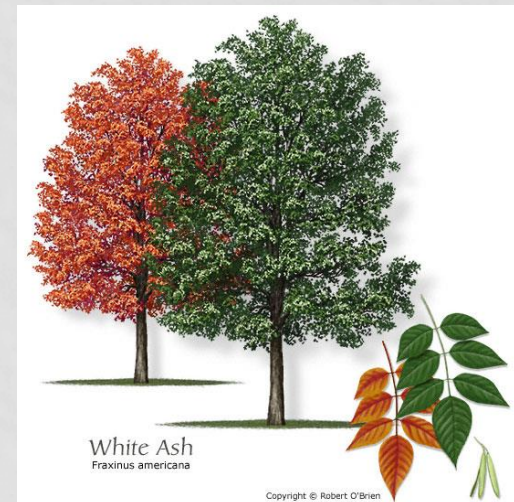
(EMERALD ASH BORER)

ARLINGTON HEIGHTS PARK DISTRICT MANAGEMENT PLAN



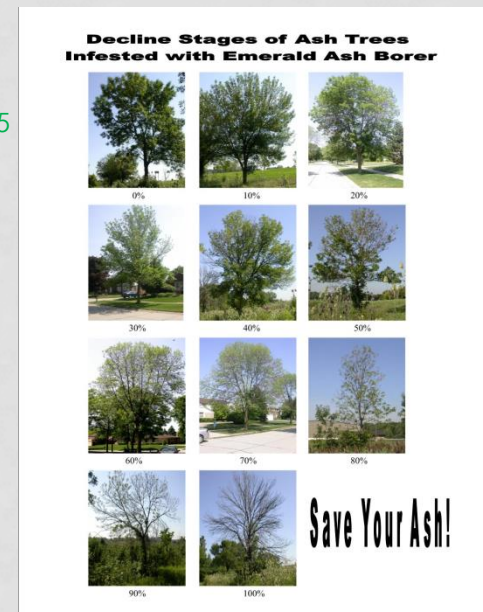
QUICK FACTS & FIGURES

- 435 Ash Trees on park property in the Parks
- 233 Ash Trees removed (110 in 2012, 98 in 2013, 25 in 2014)
- 161 Ash Trees treated since 2012 (143 in 2012, 6 in 2013, 12 in 2014)



QUICK FACTS & FIGURES CONT.

- 149 park ash trees treated (143 in 2012 & 6 in 2013)
- Additional 12 ash trees were treated in 2014
- Total treated 161 ash trees
- 41 ash trees – remaining and untreated to be evaluate in 2015



ARLINGTON LAKES & NICKOL KNOLL GOLF COURSES

- ALGC had 128 Ash trees as of 2012
- ALGC has removed 25 ash trees and treated 48
- Nickol Knoll had 77 ash trees as of 2012
- Nickol Knoll has removed 15 ash trees since 2012

WHY 10" DIAMETER BREAST HIGH

- 10" DBH is the general standard used in determining trees having reached the maturity threshold, making it a more valuable specimen. Where retaining it has more value than replacement.



ACTION PLAN

- Inventory and evaluate ash tree species in the parks
- Develop proposed tree nurseries for replacement of ash trees within current Parks
- Identify signature, specimen or historical ash trees for possible treatments
- Develop treatment schedule for ash trees in the parks
- Identify ash trees for removal
- Park district will remove any or dying park ash tree deemed hazardous by Director of Parks and Planning regardless of treatment status
- Develop a list of possible replacement trees

ACTION PLAN CONT.

- Develop removal schedule
- Quote for purchase of replacement trees
- Continue ongoing evaluation process – Infested tree, treatment tree, no action necessary at this time
- Work with VAH on possible treatment of VAH parkway trees
- Develop treatment schedule with VAH parkway trees
- Dispose of wood product properly
- Continue to educate the public
- Continue to update as information evolves

WHAT HAS THE AHPD DONE TO DATE 2015

- Inventoried and evaluated ash species in parks
- Identified possible nursery sites within parks
- Identified Signature, specimen, historical ash trees for possible treatment.
- Developed a list of approved ash tree replacement species



POSSIBLE ASH TREE REPLACEMENTS

Swamp White Oak

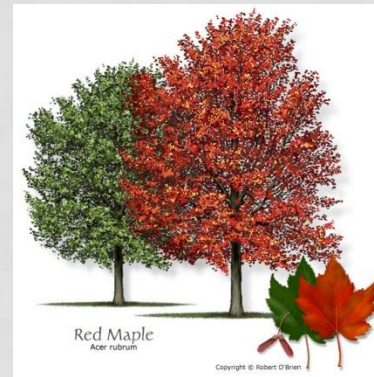
Kentucky Coffee Tree

Red Maple

Ginkgo

Honey Locust

American Linden



WHAT IS AHPD PLAN FOR SPRING/SUMMER 2015

- Identify ash trees for removal
- Purchase and install nursery trees
- Treat signature trees
- Develop a removal schedule
- Purchase ash tree replacements
- Continue to work with VAH on EAB developments
- Continue ash tree evaluations
- Update AHPD website to continue to educate the public
- Update Board as needed as information develops and evolves

PROPOSED NURSERY SITES 2015

- Lake Arlington
- Melas
- Pioneer
- Klehm

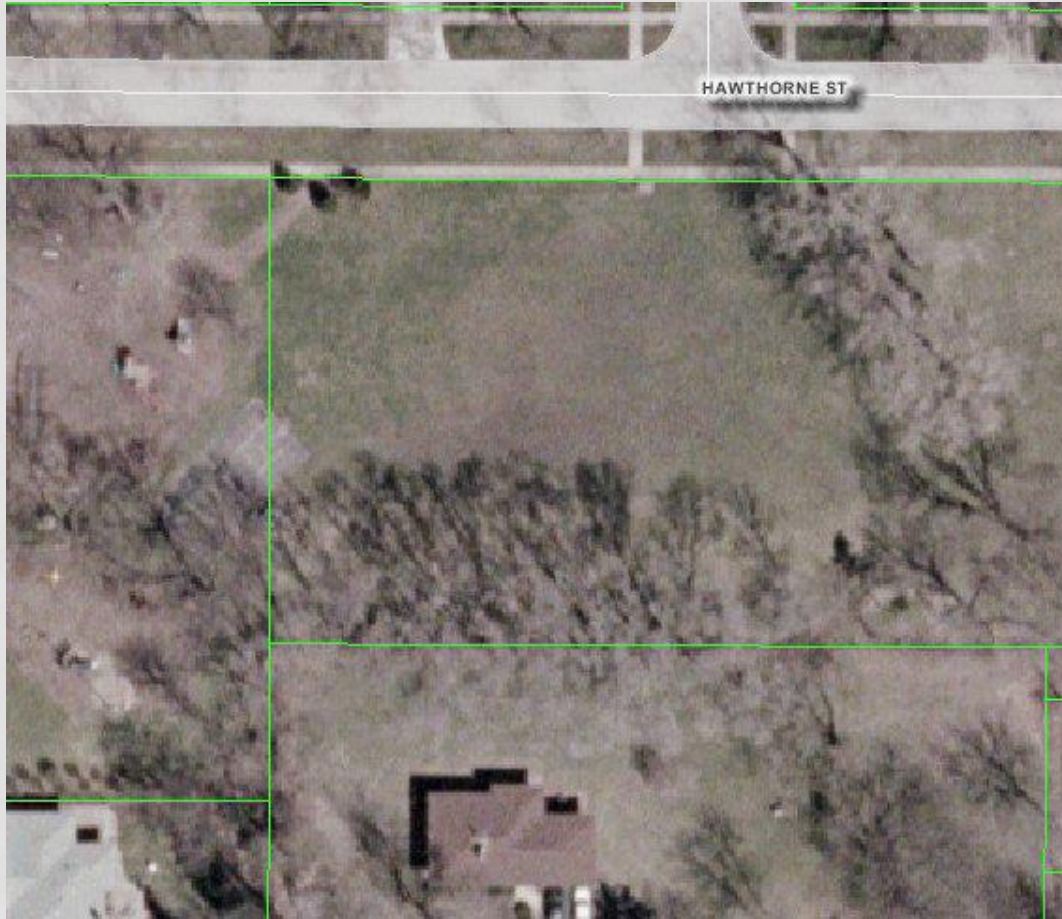
LAKE ARLINGTON



MELAS



KLEHM



PIONEER



SIGNATURE TREE LOCATIONS

- Banta
- Berbecker
- Camelot
- Carefree
- Carousel
- Carriage Walk
- Centennial
- Creekside
- Cronin
- Frontier
- Lake Arlington
- Greens
- Greenslopes
- Happiness
- Hasbrook
- Heritage
- HTC
- Kingsbridge
- Lake Terramere
- Melas
- Memorial
- Methodist
- NSP
- Olympic
- Patriots
- Pioneer
- Prairie
- Rand B.
- Recreation
- Sunset Ridge
- Victory
- Virginia T.
- Volz
- Westgate
- Willow

TREATMENT

- Soil Drenching
- Tree Injection



