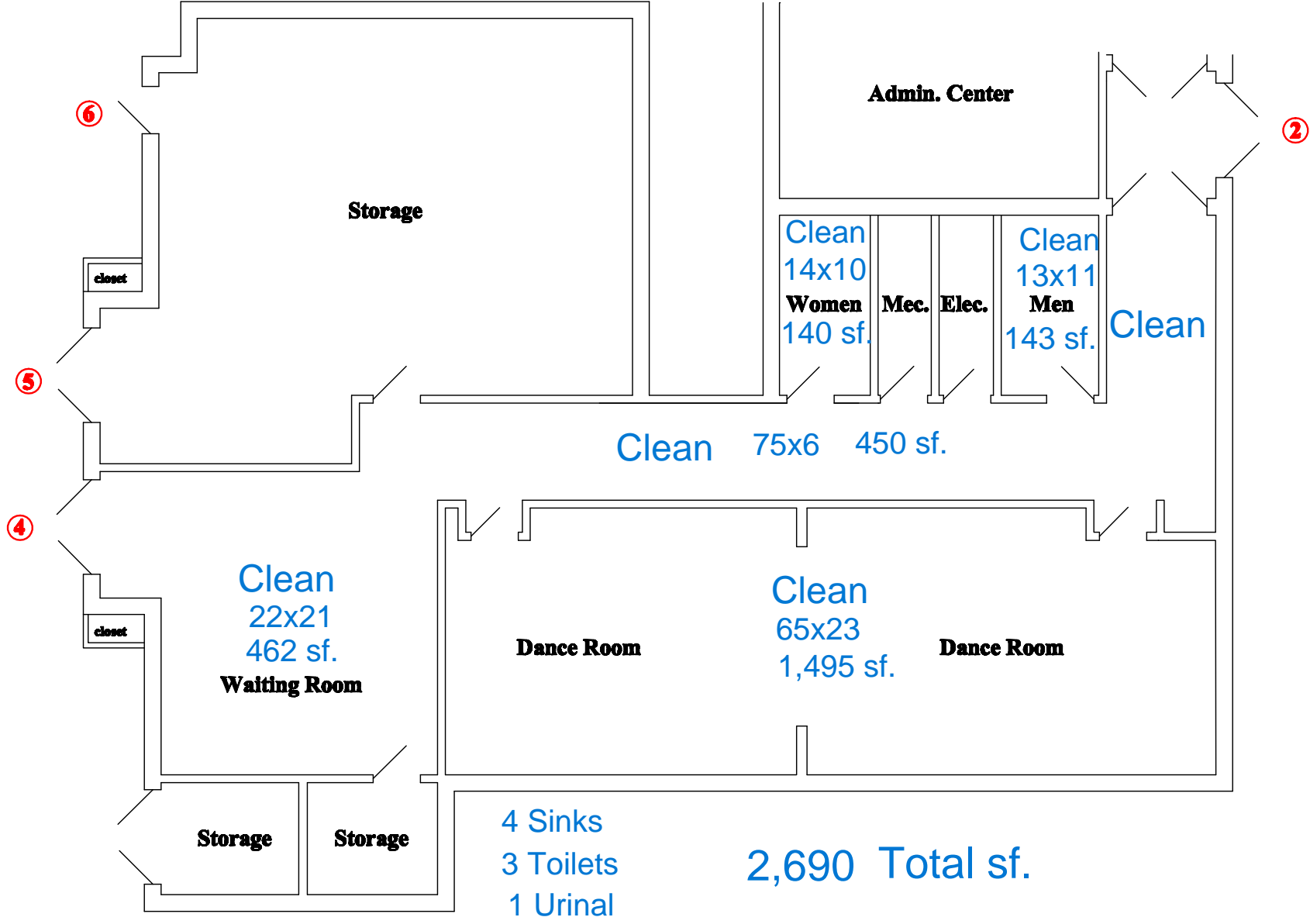


**Janitorial Bid 2026**  
**Addendum #2- Floor Plans and Square Footage**

Index of floor plans for facilities to be cleaned

1. Ad Center Annex
2. Ad Center 1<sup>st</sup> Floor
3. Ad Center 2<sup>nd</sup> Floor
4. Ad Center Basement
5. ARC 1<sup>st</sup> Fl 1 of 4
6. ARC 1<sup>st</sup> Fl 2 of 4
7. ARC 2<sup>nd</sup> Fl 3 of 4
8. ARC Basement 4 of 4
9. ARC (entrance common area)
10. Arlington Lakes Golf Club 1<sup>st</sup> Floor
11. Arlington Lakes Golf Club 2<sup>nd</sup> Floor
12. Arlington Lakes Golf Course Service Center
13. Camelot Pool House
14. Davis Street 2 Service Center
15. Davis Street Service Center
16. Forest View Racquet Club 1<sup>st</sup> Floor
17. Forest View Racquet Club 2nd Floor
18. Frontier Pool House
19. Frontier Service Center
20. Hasbrook Building
21. Heritage Pool House
22. Heritage Tennis Club
23. Lake Arlington Lower Level
24. Lake Arlington Main Floor
25. Melas Concession Building-Bathrooms
26. Nickol Knoll Golf Clubhouse
27. Nickol Knoll Golf Course Service Center
28. Pioneer Pool House
29. Recreation Concession
30. Recreation Pool House
31. Recreation Basement
32. Recreation 1<sup>st</sup> Floor
33. Recreation Stand Alone Restrooms (by Playground)
34. Sunset Meadows Building

# Administration Center

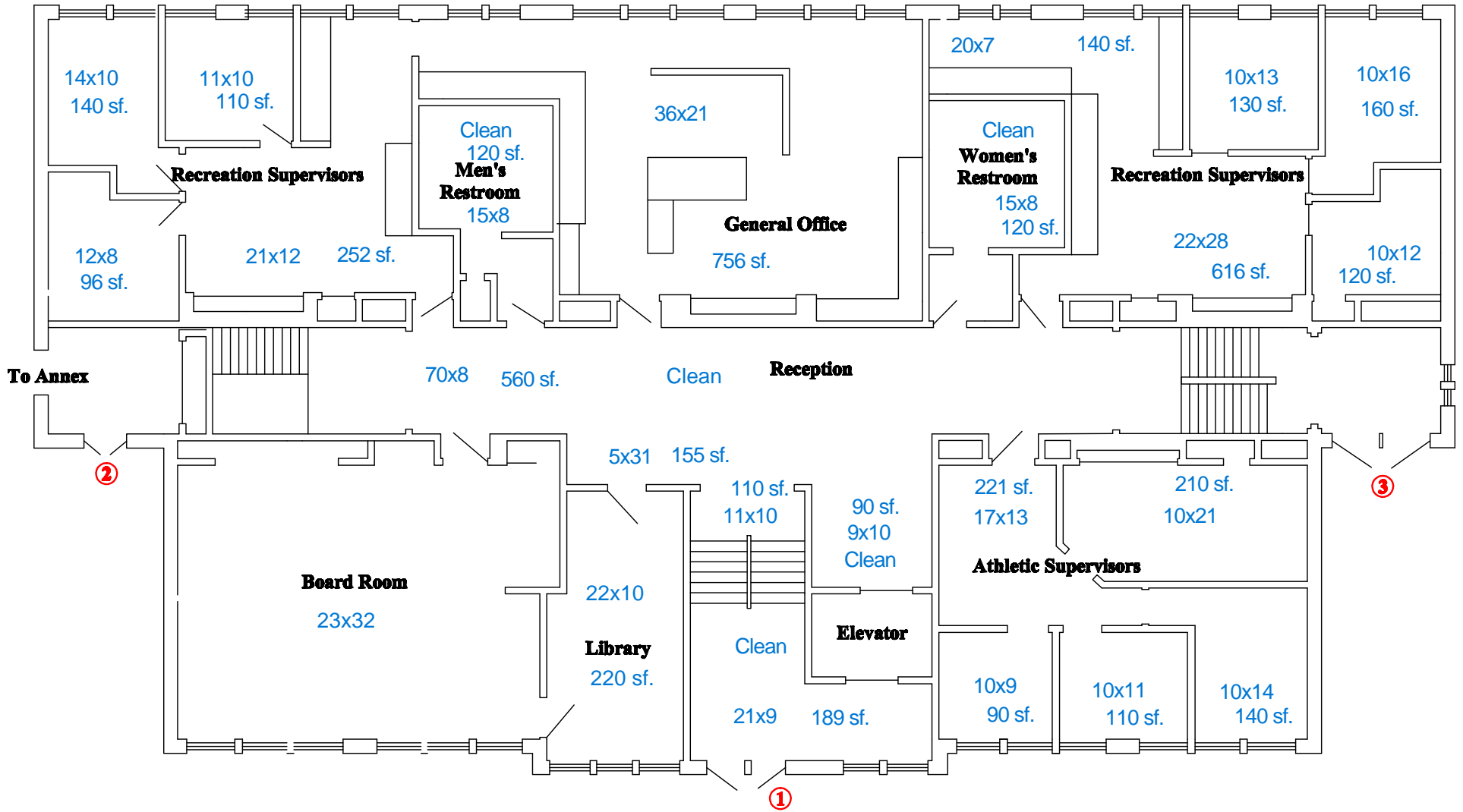


2,690 Total sf.

Arlington Heights Park District  
Administration Center  
Annex



# Administration Center



To Annex

②

③

①

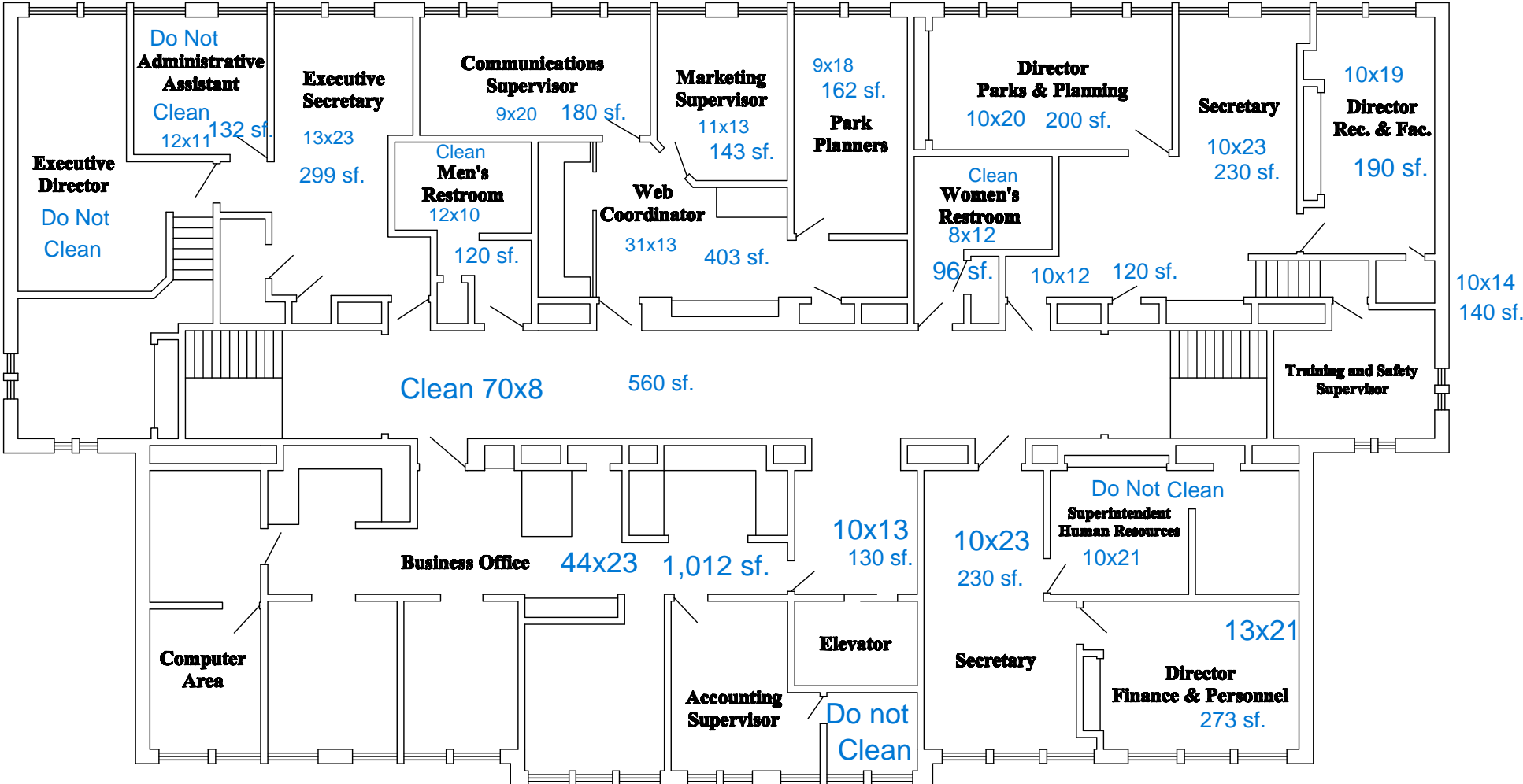
6 Sinks  
5 Toilets  
1 Urinal

1,254 Total sf.

Arlington Heights Park District  
Administration Center  
First Floor



# Administration Center



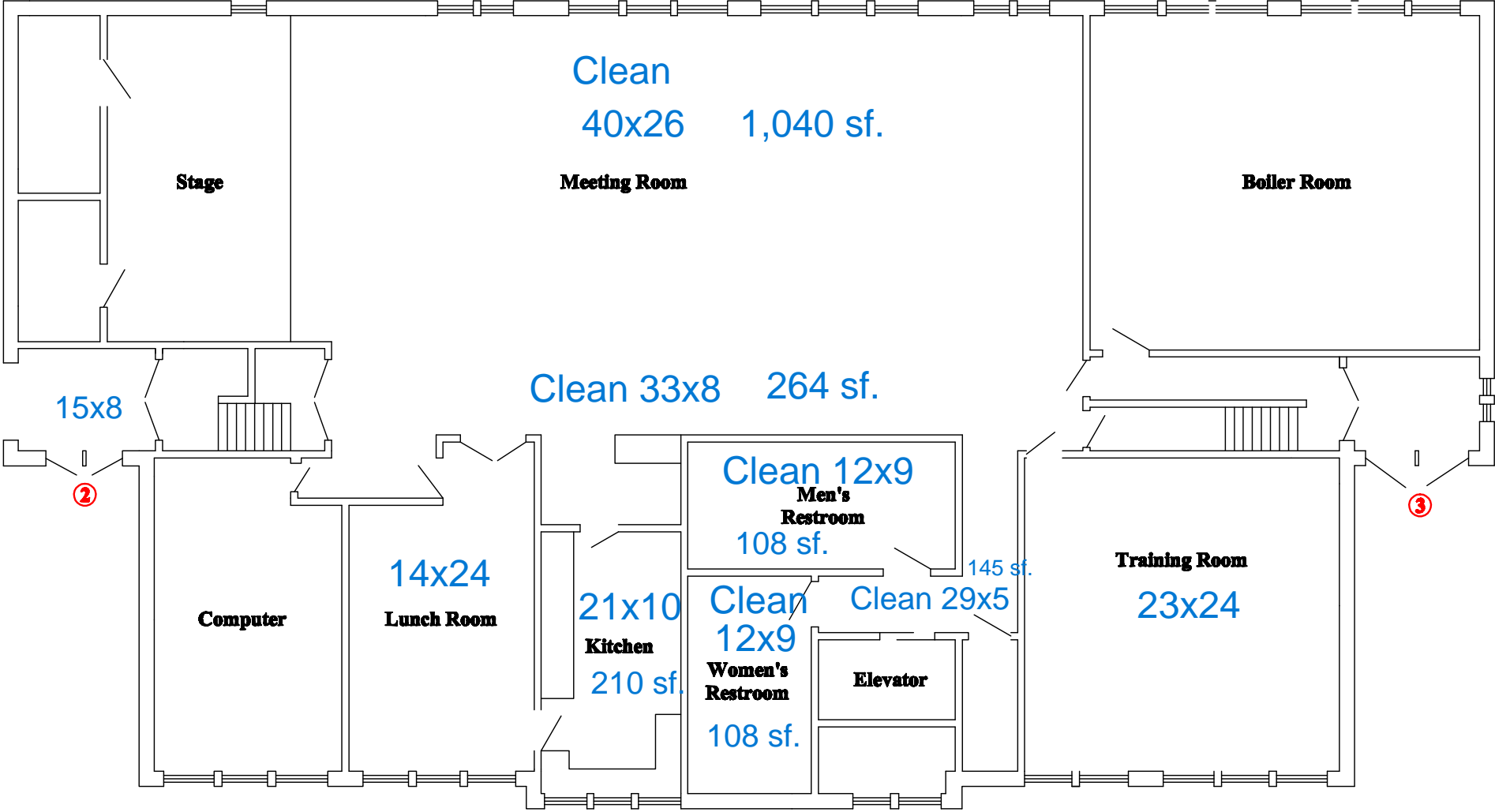
4 Sinks  
3 Toilets  
1 Urinal

776 Total sf.

Arlington Heights Park District  
Administration Center  
Second Floor



# Administration Center



5 Sinks  
3 Toilets  
1 Urinal

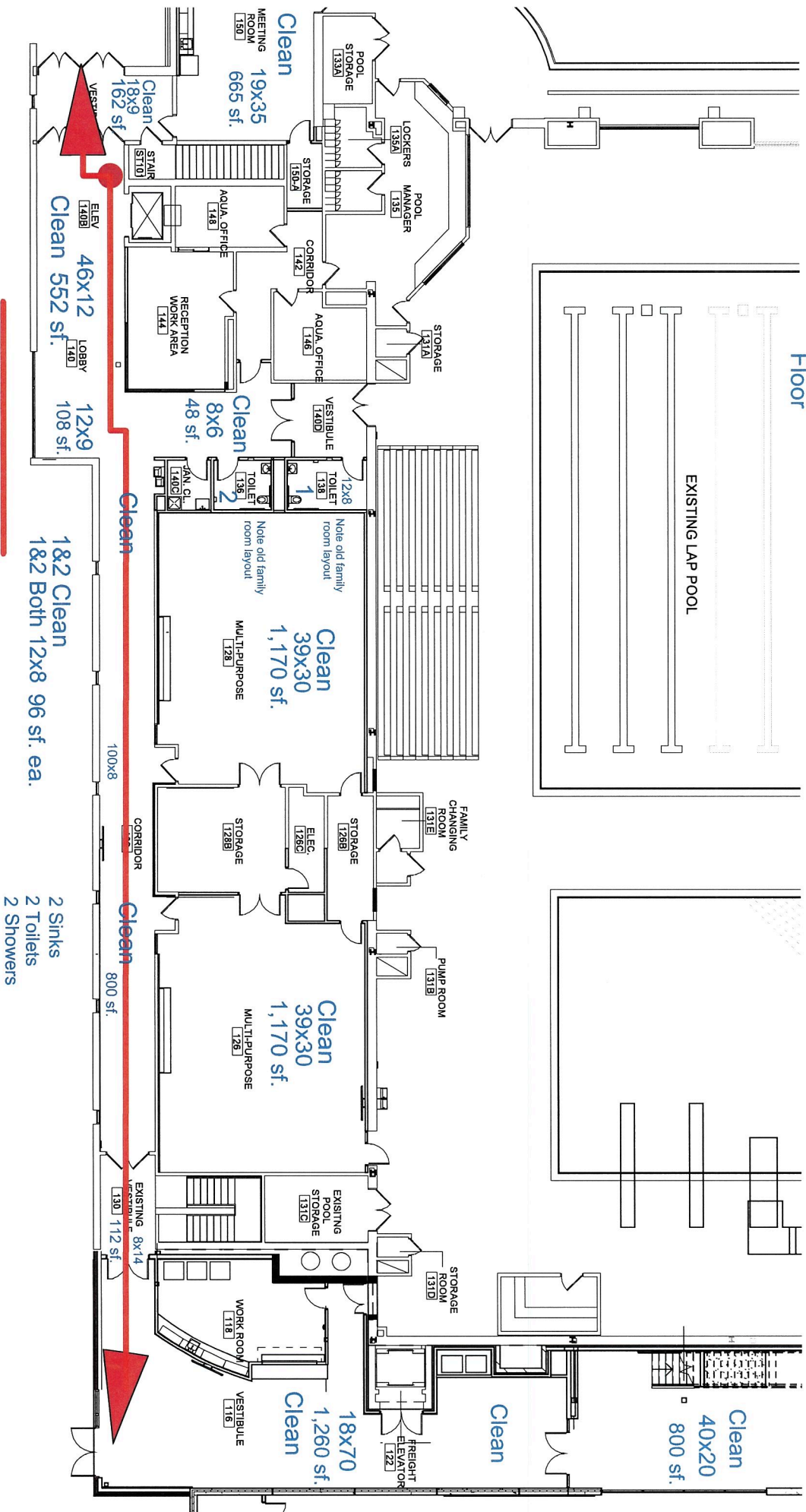
1,665 Total sf.

Arlington Heights Park District  
Administration Center  
Basement





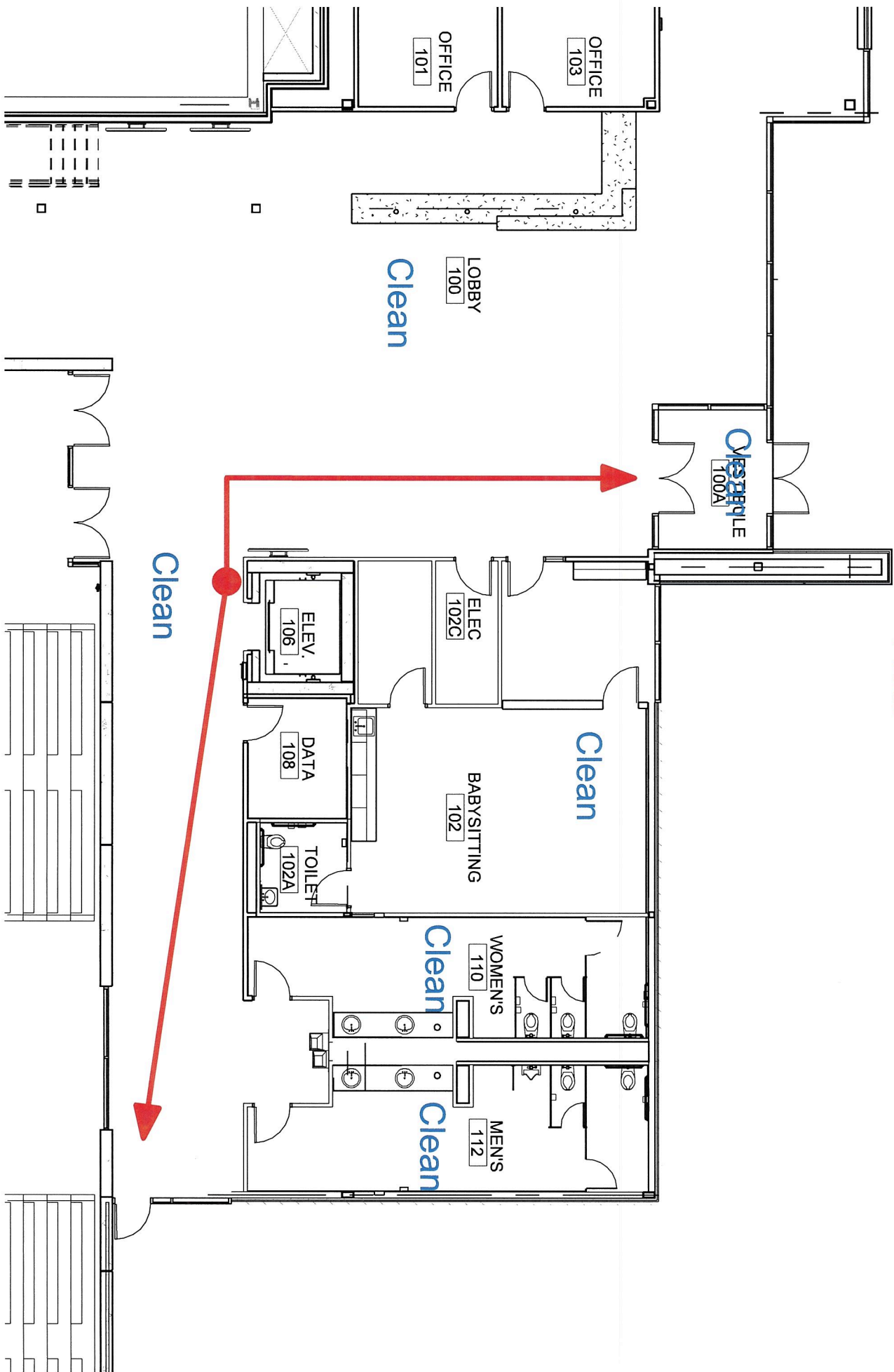
ARC 1st Floor



7,039 Total  
sf.

- 2 Sinks
- 2 Toilets
- 2 Showers

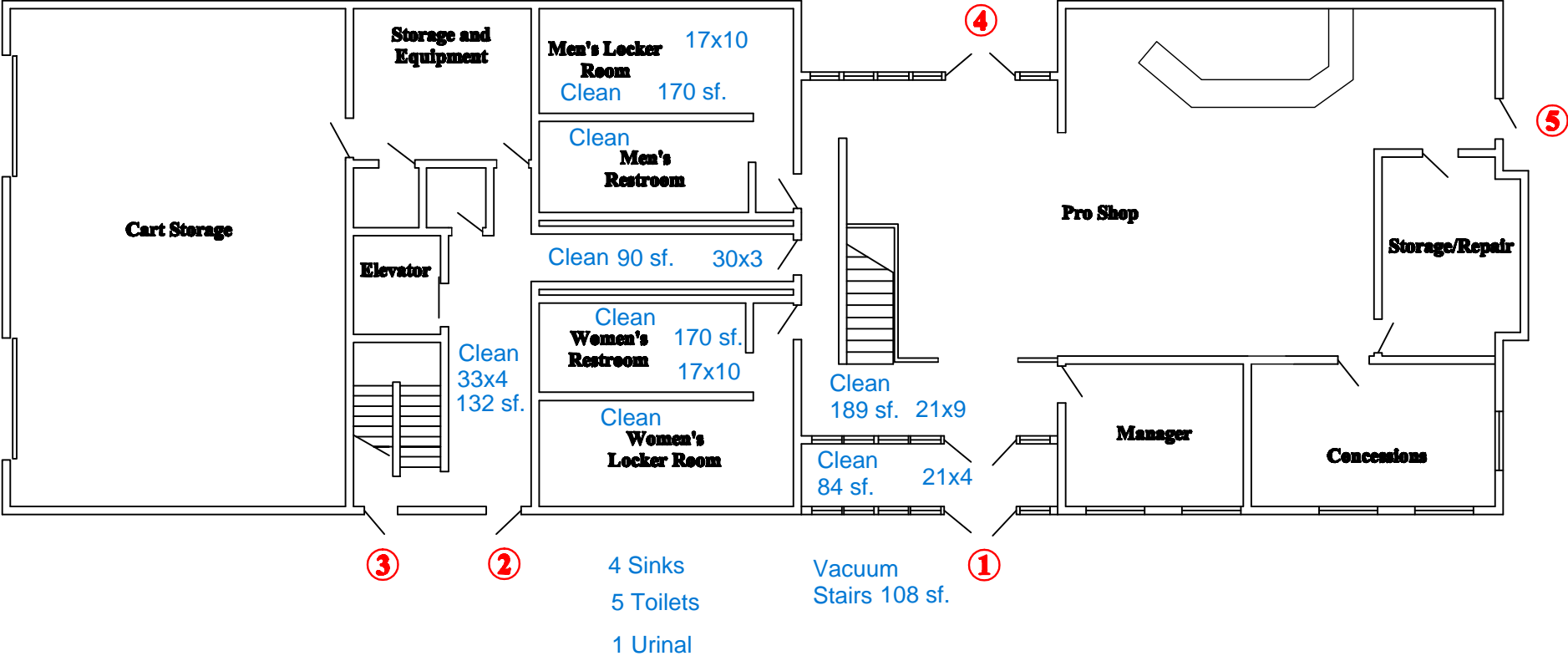
# ARC 1st Floor





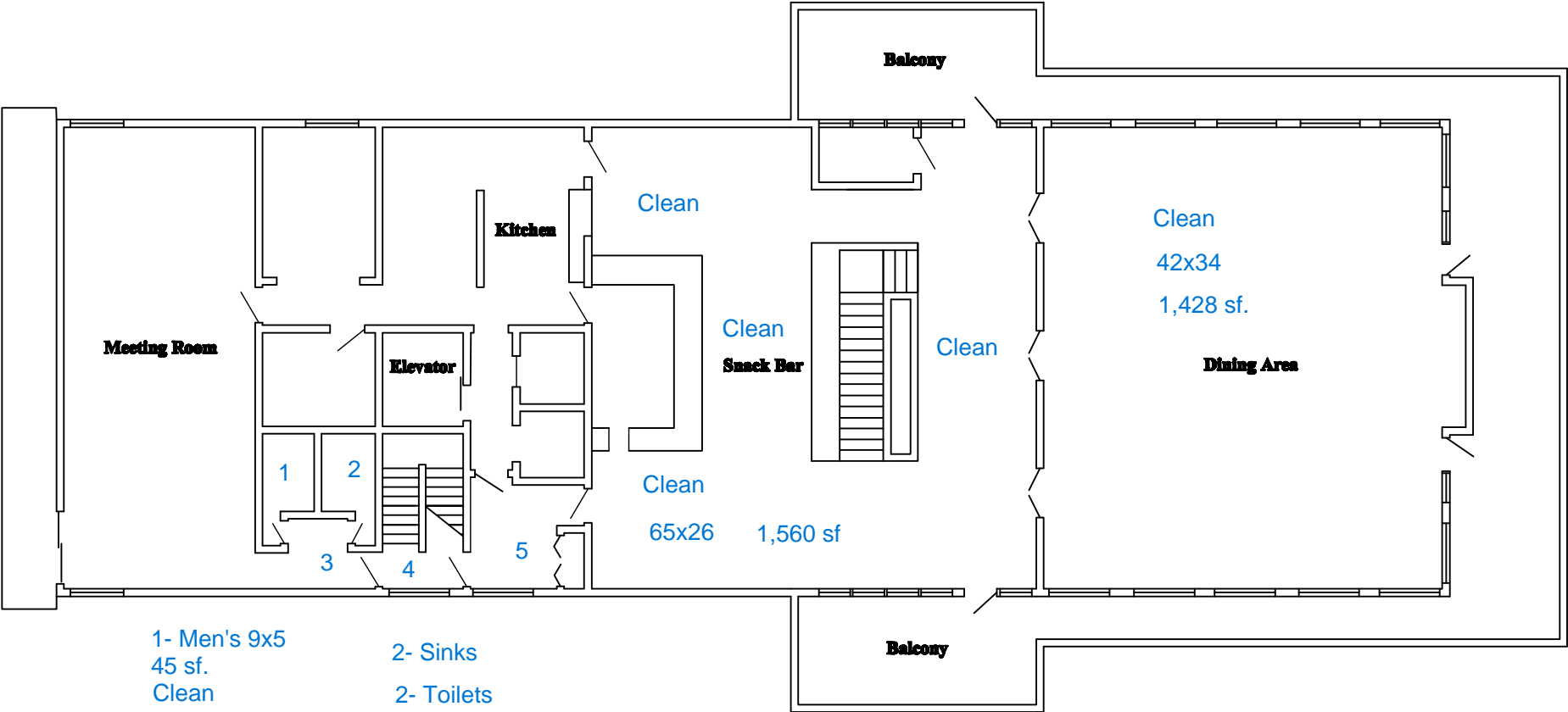


# Arlington Lakes Golf Club



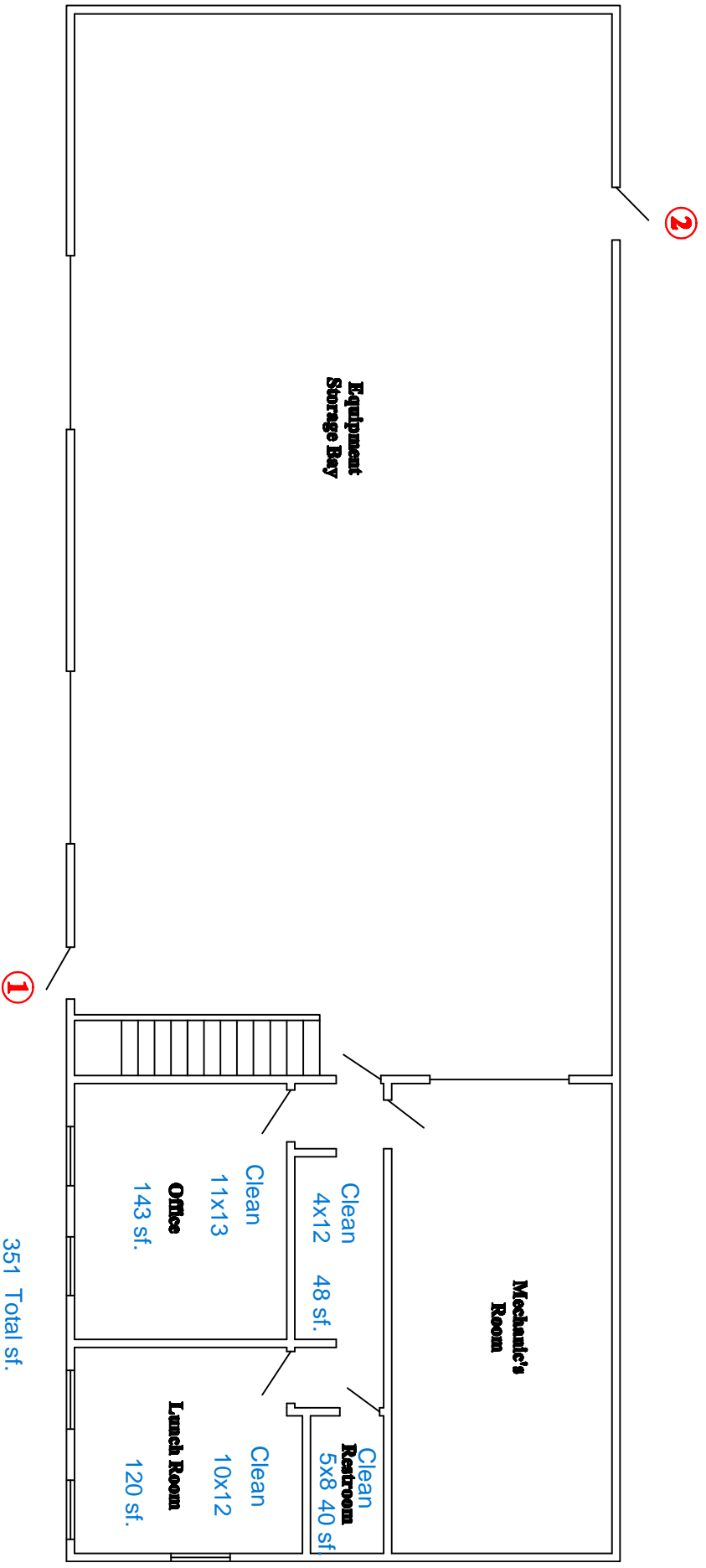
Arlington Heights Park District  
Arlington Lakes Golf Club  
First Floor

# Arlington Lakes Golf Club



**Arlington Heights Park District  
Arlington Lakes Golf Club  
Second Floor**

# Arlington Lakes Service Center

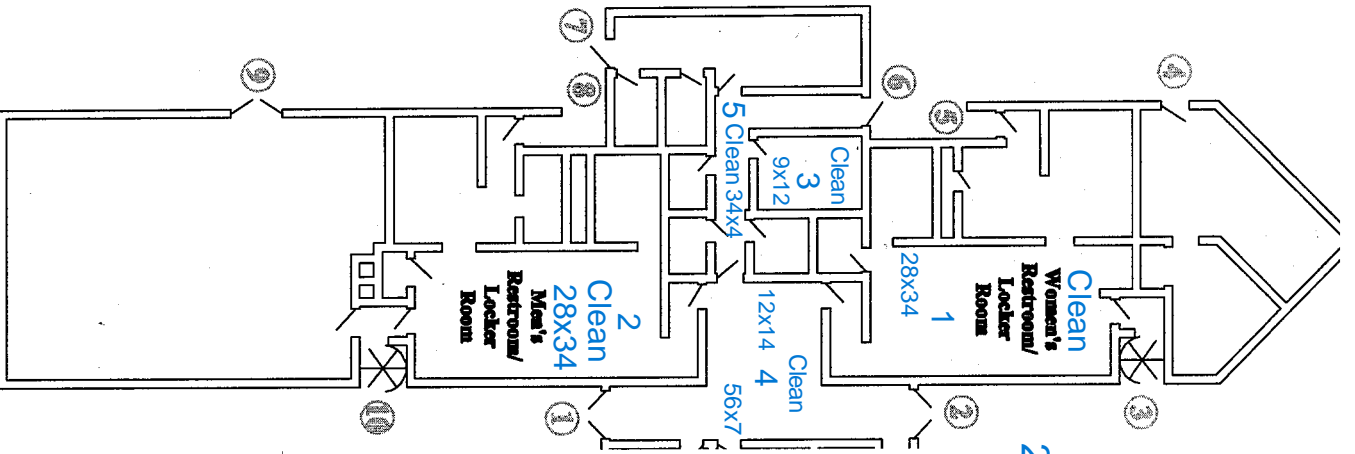


**Arlington Heights Park District**  
**Arlington Lakes Service Center**  
**Main Level**

# Camelot Park Community Center

## Pool

2,708 sf.

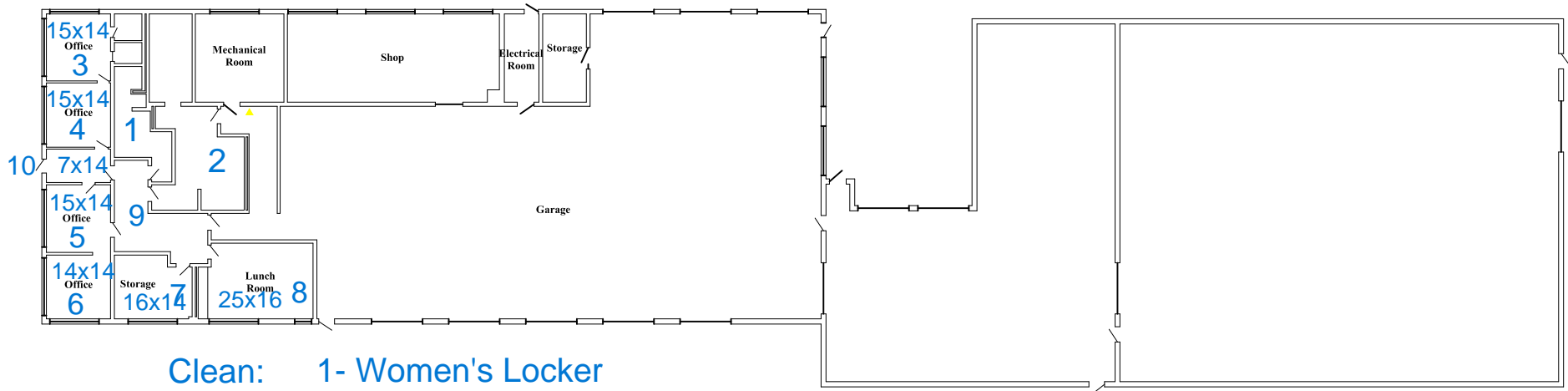


- 1- Women's Lockerroom
- 2- Men's Lockerroom
- 3- Family Changing room
- 4- Lobby
- 5- Hallway

- 5 Sinks
- 12 Toilets
- 13 Showers
- 3 Urinals

# Evacuation Map

## Davis Street Service Center II

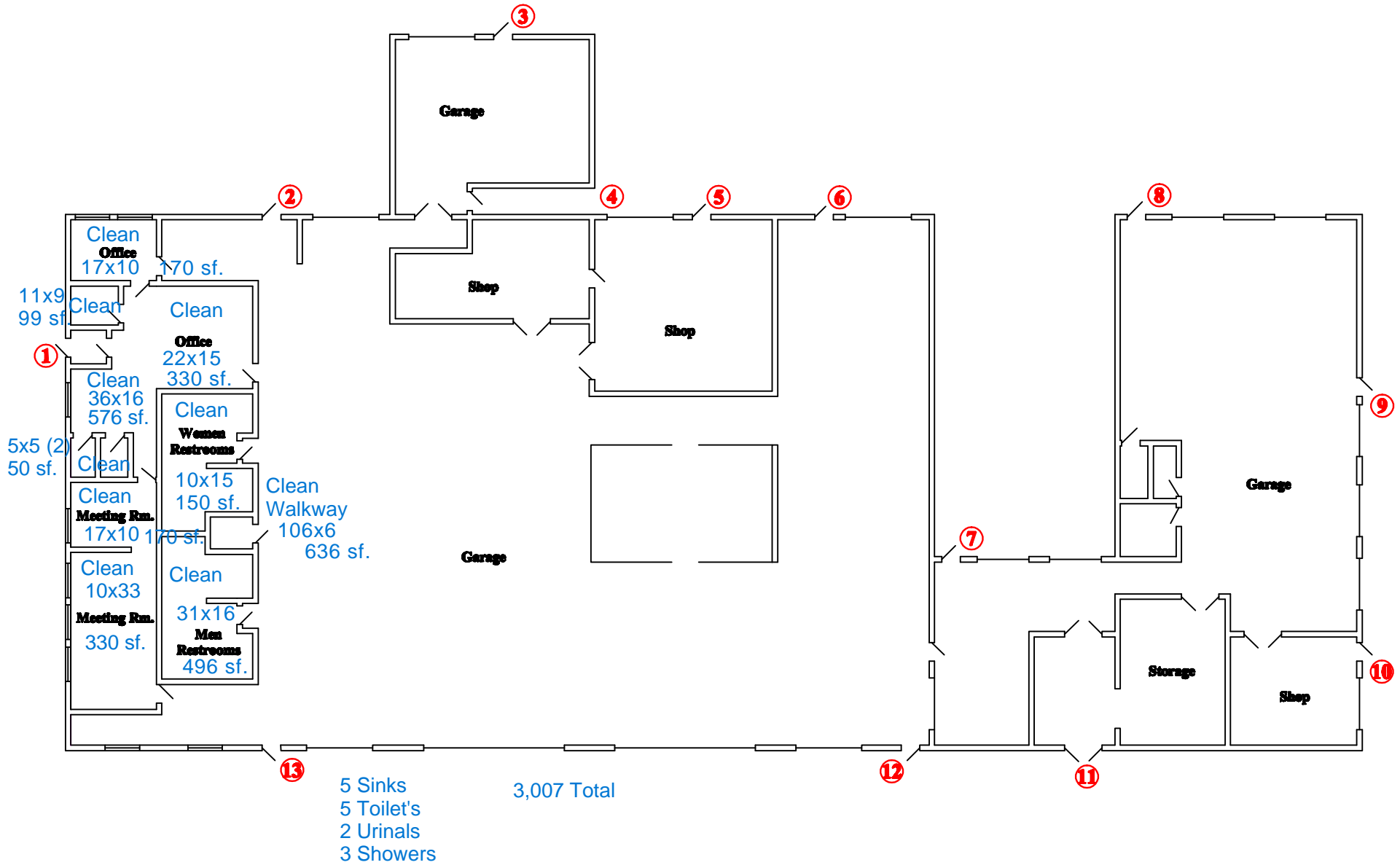


- Clean:
- 1- Women's Locker room 13x12 156 sf.
  - 2- Men's Locker room 17x41 697 sf.
  - 3-6 Offices 59x14 826 sf.
  - 7- Lunch room 16x14 224 sf.
  - 8- Break/Meeting room 25x16 400 sf.
  - 9- Hall 17x20 340 sf.
  - 10- Entrance 7x14 98 sf.

2,741 Total

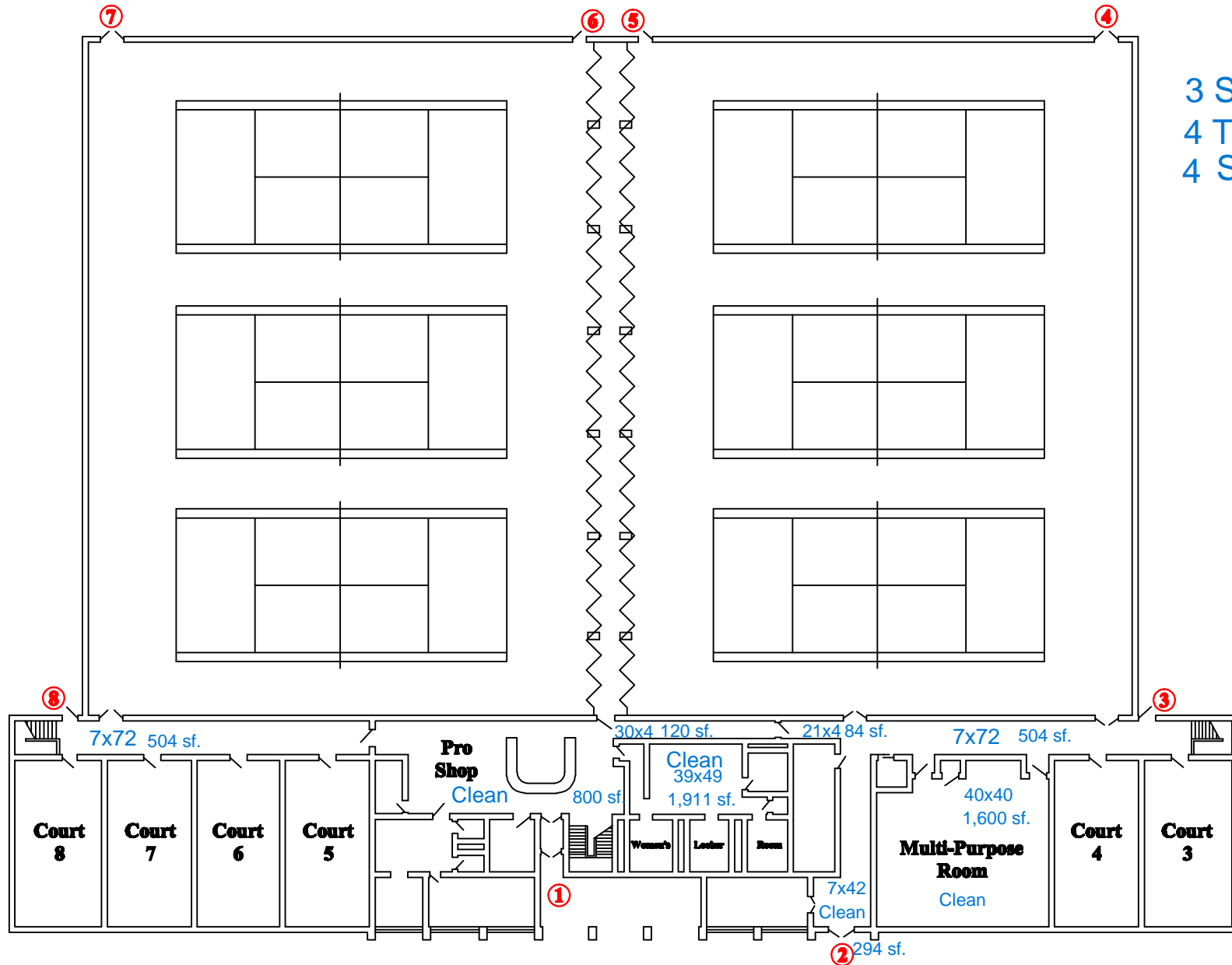
- 2 Sinks
- 3 Toilets
- 2 Urinals
- 2 Shower

# Davis Street Service Center



**Arlington Heights Park District  
Davis Street Service Center**

# Forest View Racquet & Fitness Center



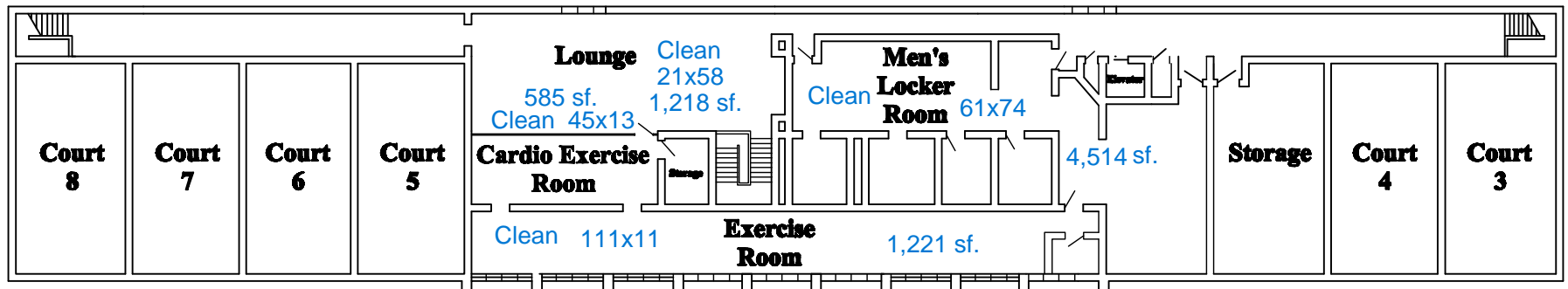
5,817 Total sf.

Arlington Heights Park District  
Forest View Racquet & Fitness Center  
First Floor



# Forest View Racquet & Fitness Center

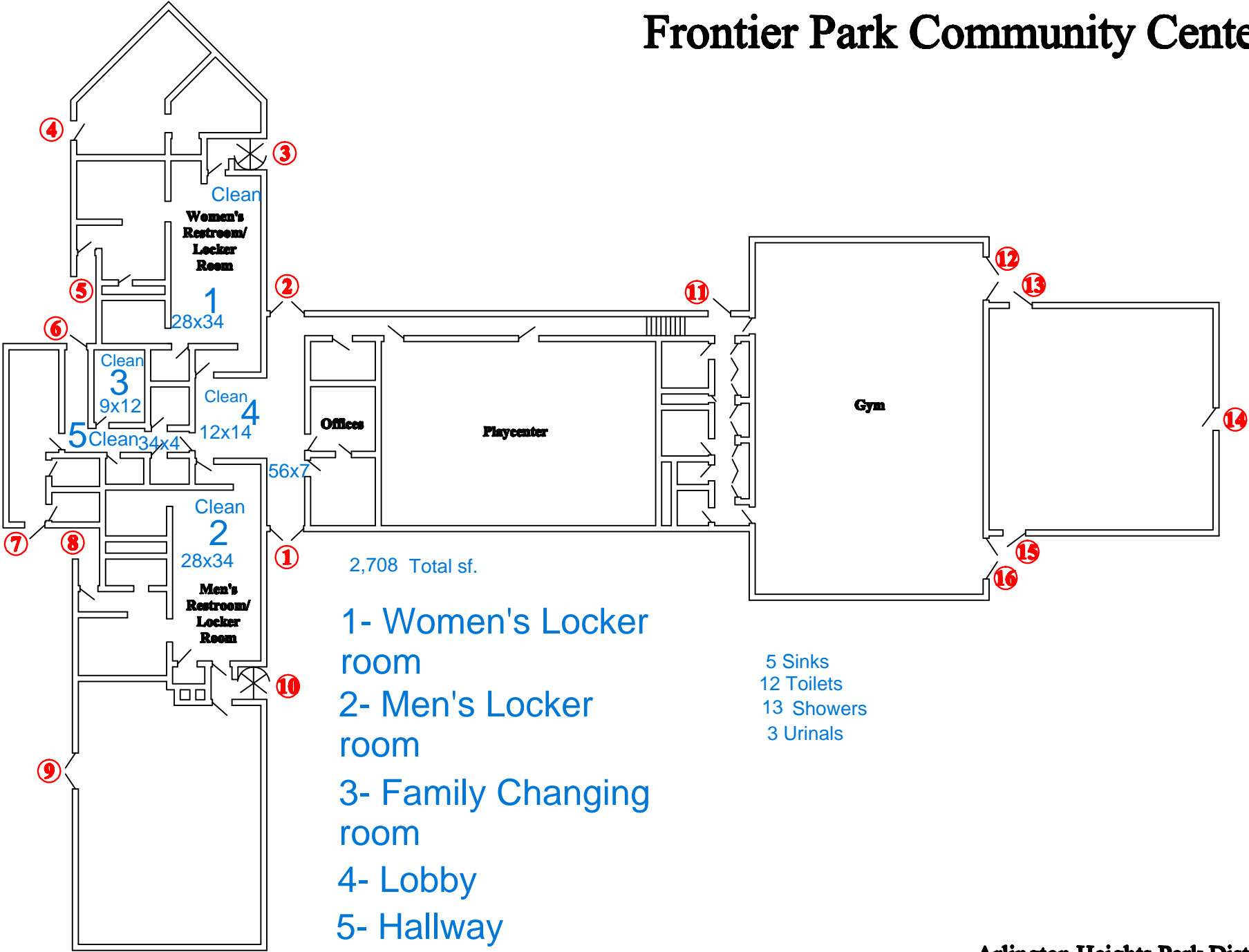
7,538 Total sf.



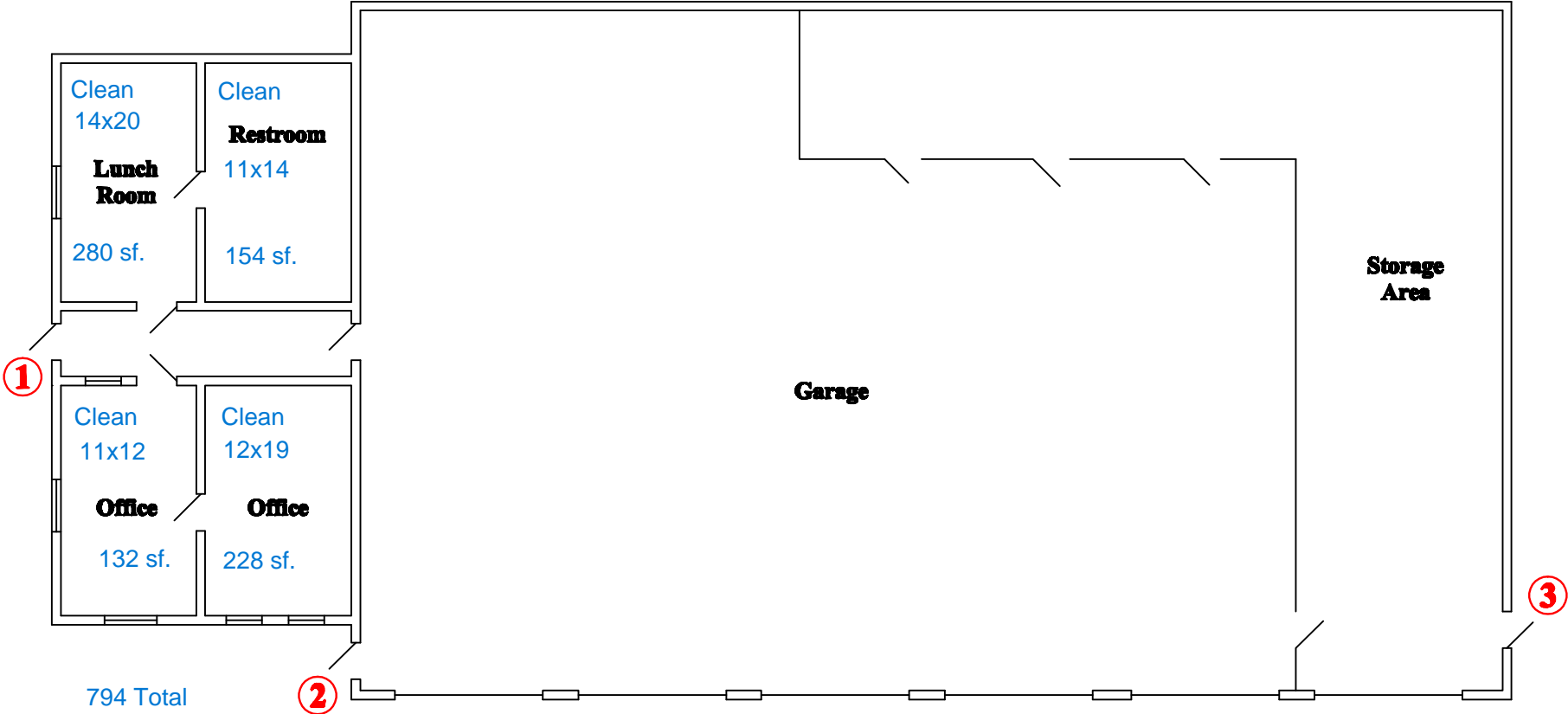
- 5 Sinks
- 3 Toilets
- 2 Urinals
- 8 Showers

Arlington Heights Park District  
Forest View Racquet & Fitness Center  
Second Floor

# Frontier Park Community Center



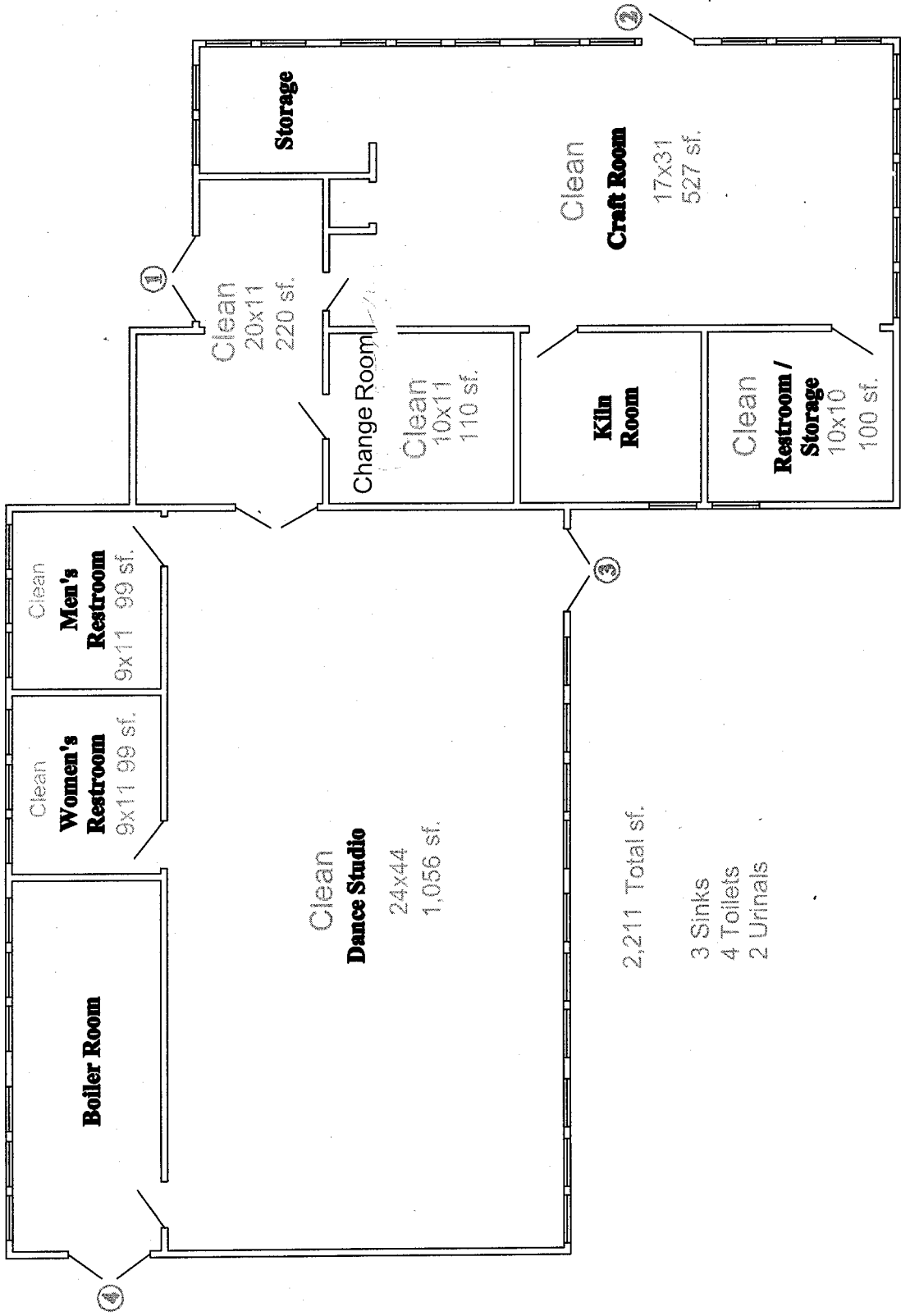
# Frontier Park Service Center



- 3 Sinks
- 2 Urinals
- 2 Toilets
- 1 Shower



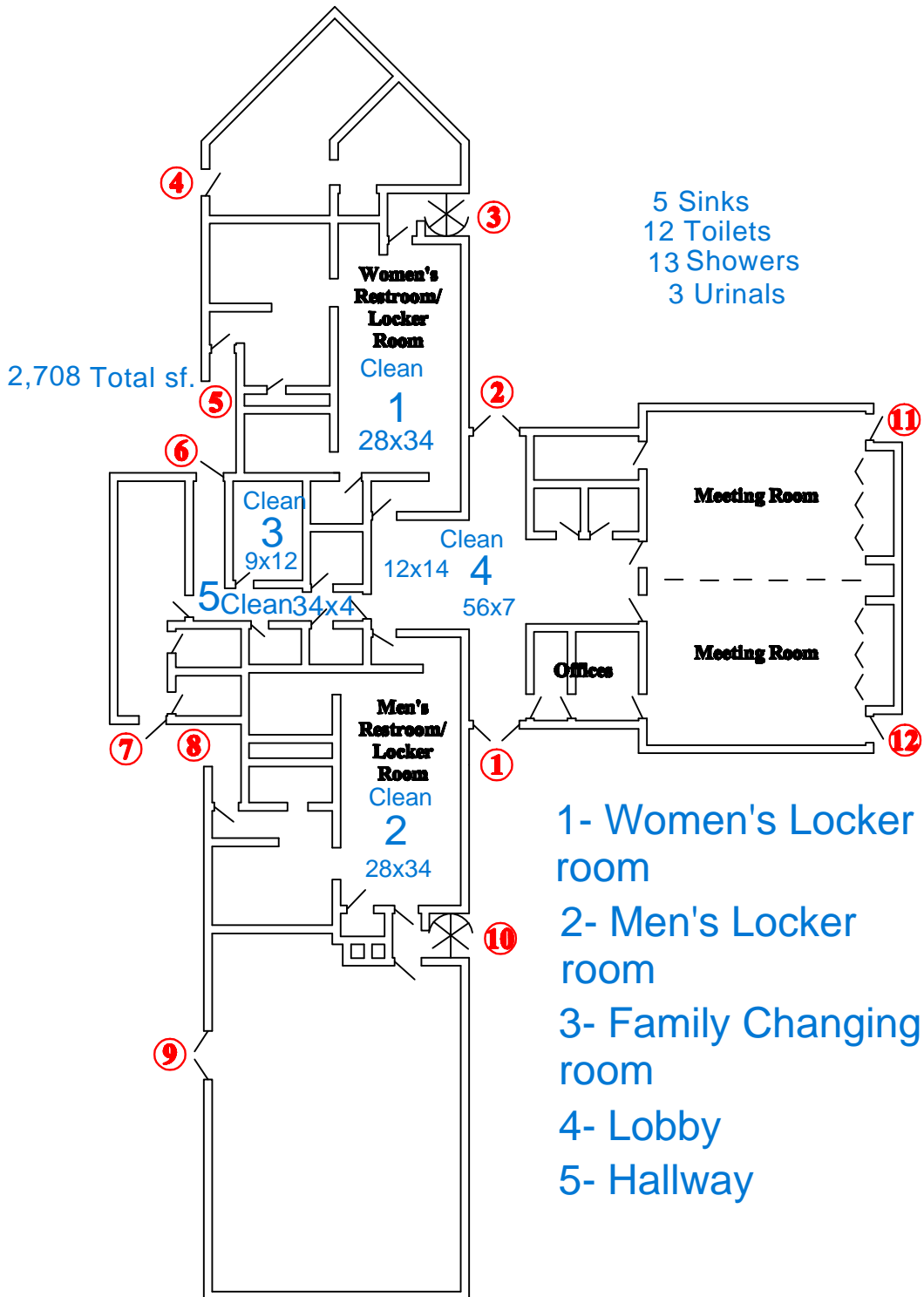
# Hasbrook Park Building



Arlington Heights Park District  
Hasbrook Park Building

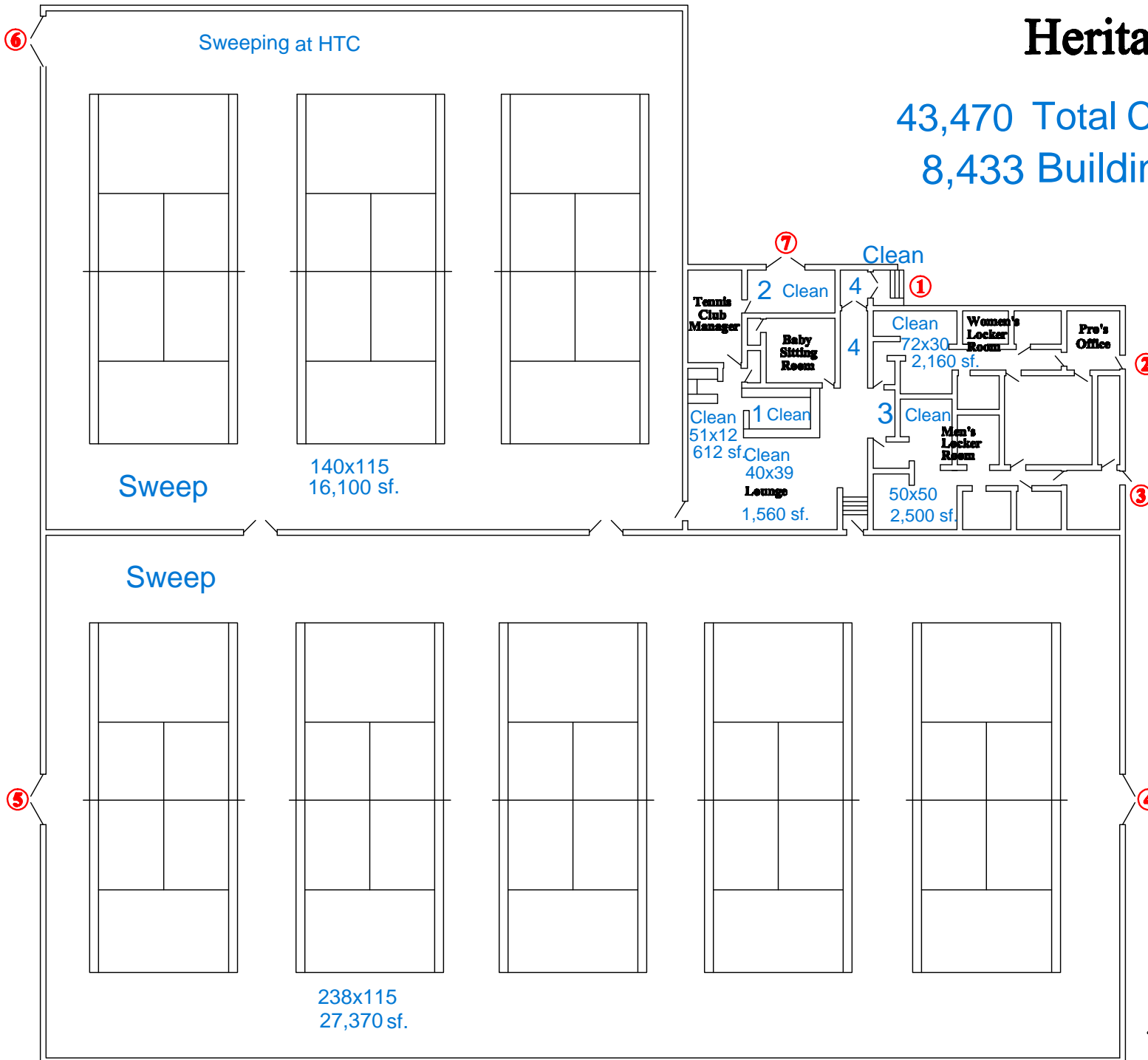


# Heritage Park Community Center



# Heritage Tennis Club

43,470 Total Court sf.  
8,433 Building sf.

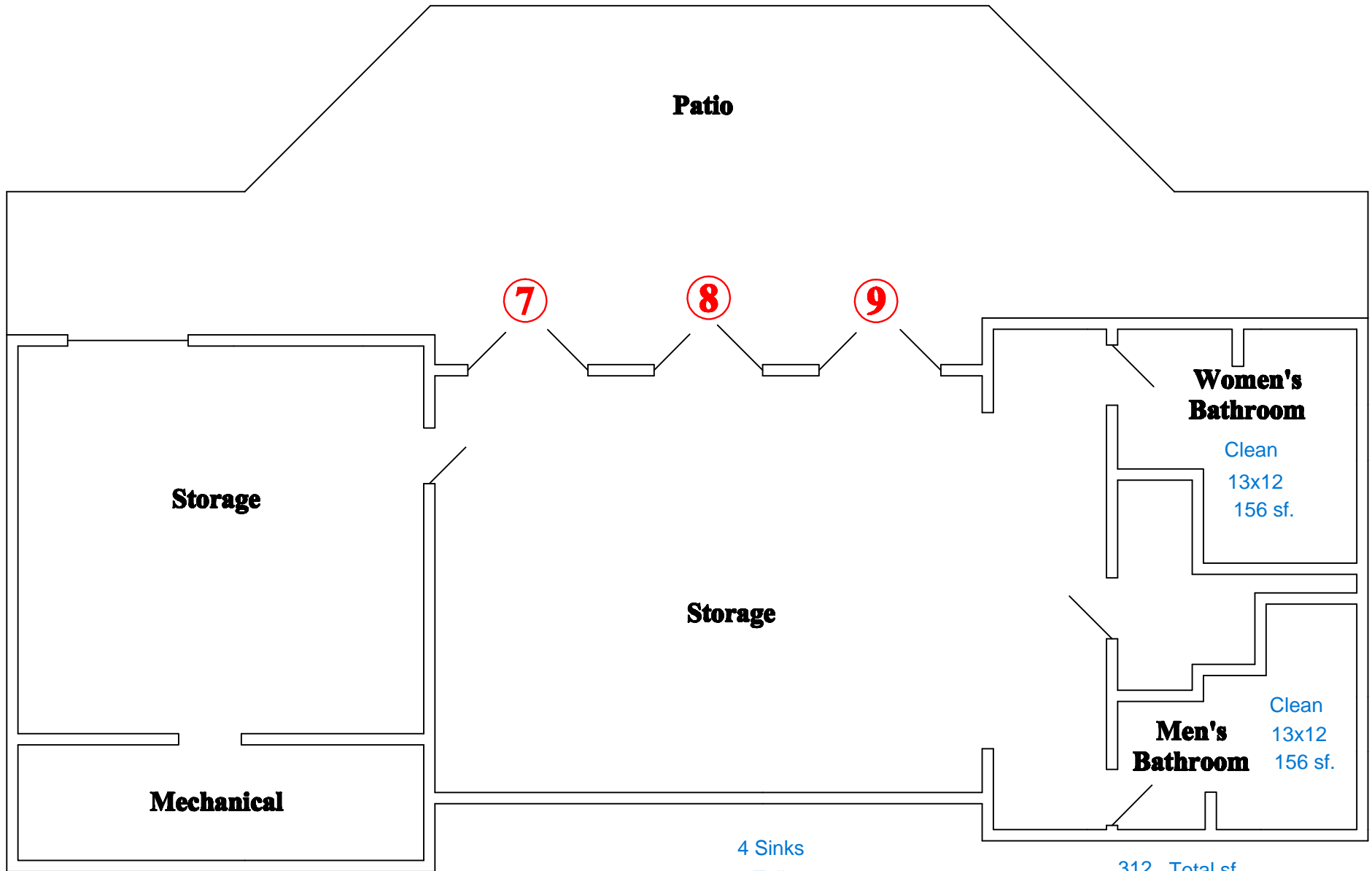


- 1- Kitchen 11x9 99 sf.
- 2- Bathroom 7x8 56 sf.
- 3- Lockerroom Halls 57x22 (Clean) 1,254sf.
- 4- 8x24 192 sf.

- 8 Sinks
- 7 Toilets
- 2 Urinals
- 9 Showers

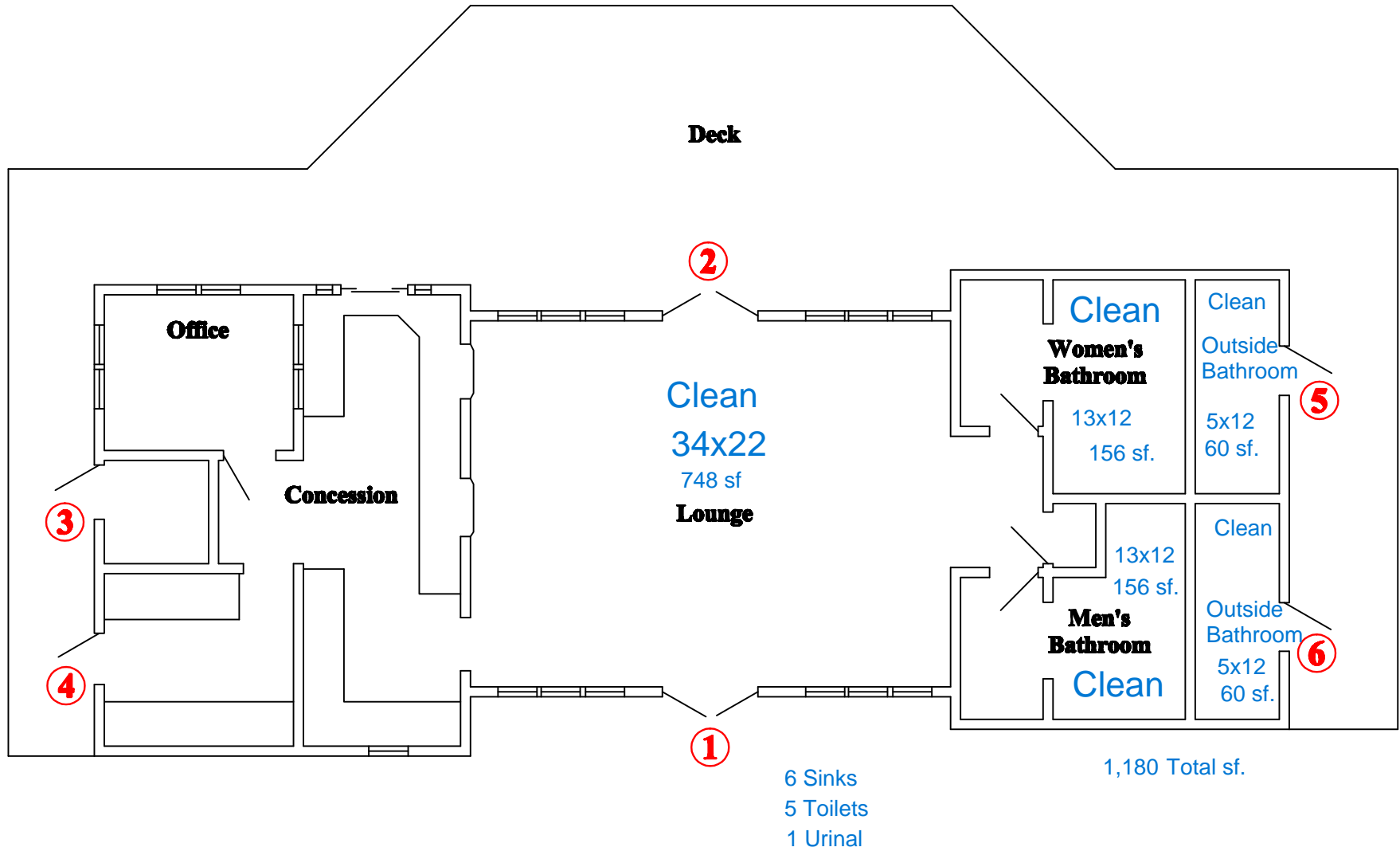
**Arlington Heights Park District  
Heritage Tennis Club**

# Lake Arlington

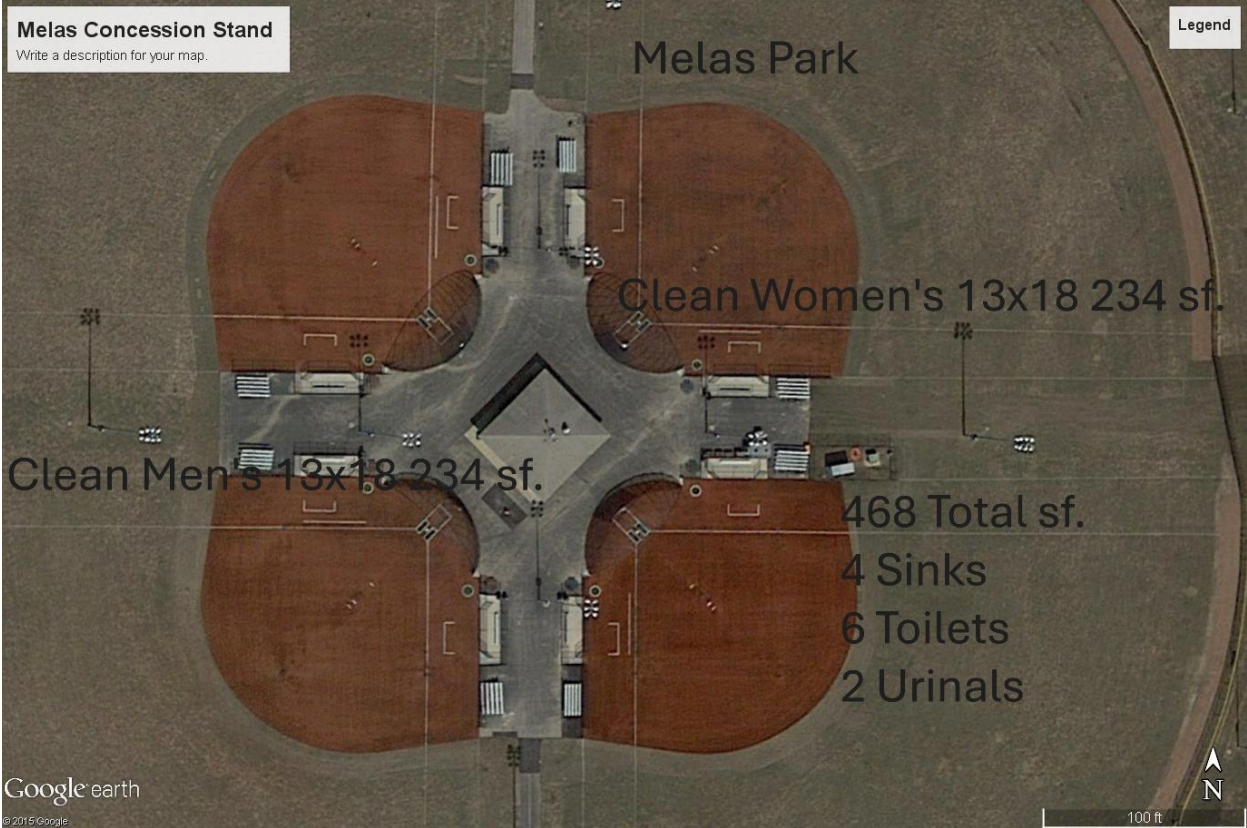


**Arlington Heights Park District  
Lake Arlington  
Lower Level**

# Lake Arlington



# MELAS PARK OUTDOOR BATHROOMS

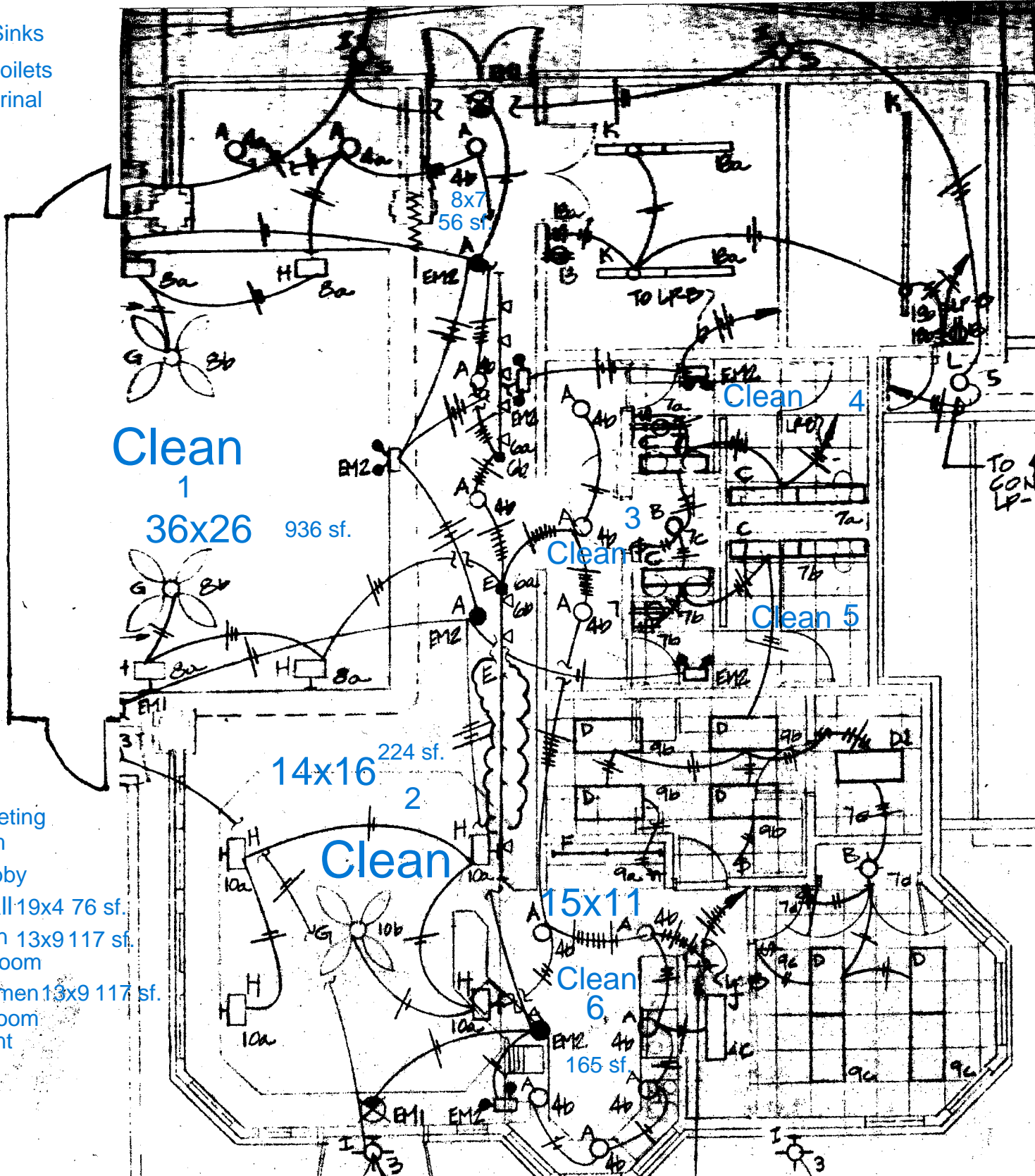


Nickol Knoll Golf Course Club House

Arlington Heights Park District

1,961 Total sf.

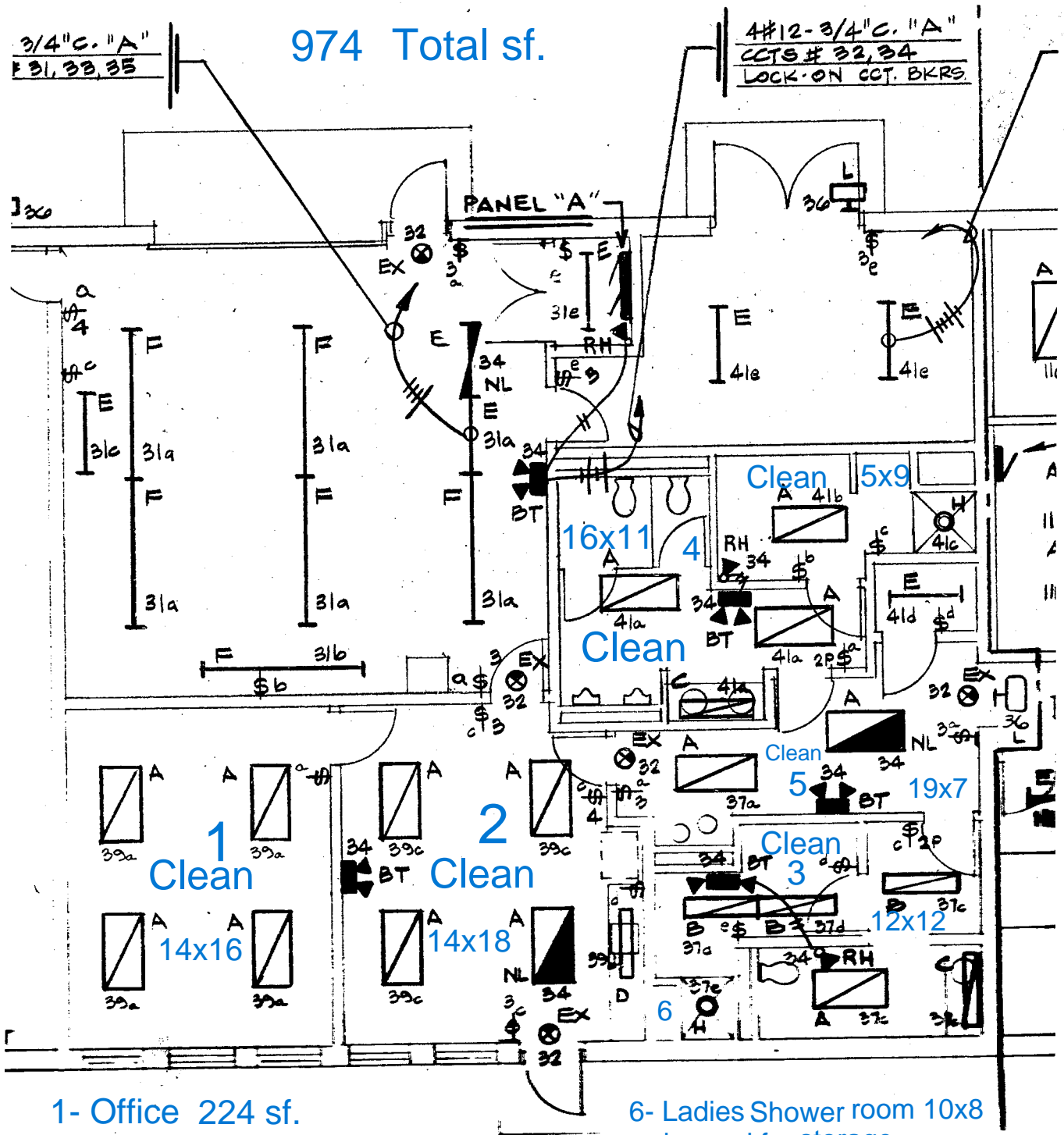
- 5 Sinks
- 3 Toilets
- 1 Urinal



- 1- Meeting Room
- 2- Lobby
- 3- Hall 19x4 76 sf.
- 4- Men 13x9 117 sf. Rest room
- 5- Women 13x9 117 sf. Rest room
- 6- Front Desk

# Nickol Knoll Service Center

974 Total sf.



1- Office 224 sf.

2- Break room 252 sf. 3 Sinks

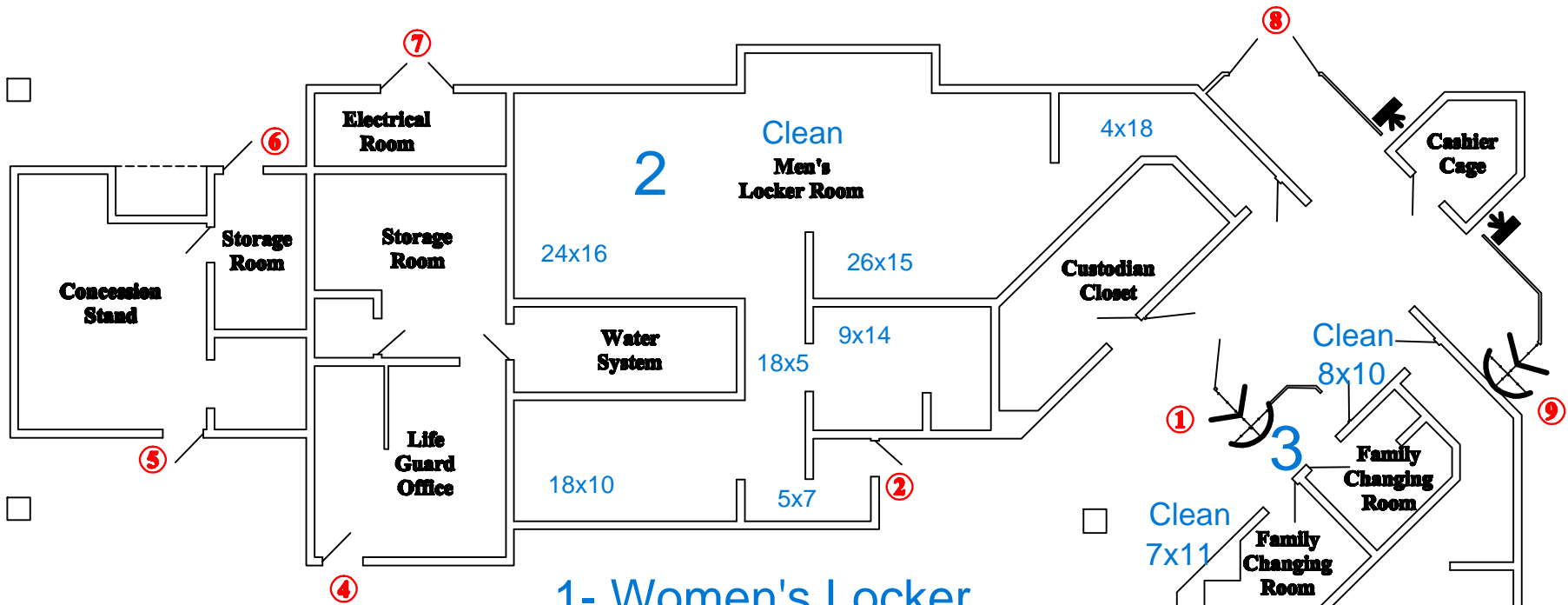
3- Women's 3 Toilets

Lockerroom 144 sf. 2 Urinals

4- Men's 1 Shower  
Lockerroom 221 sf.

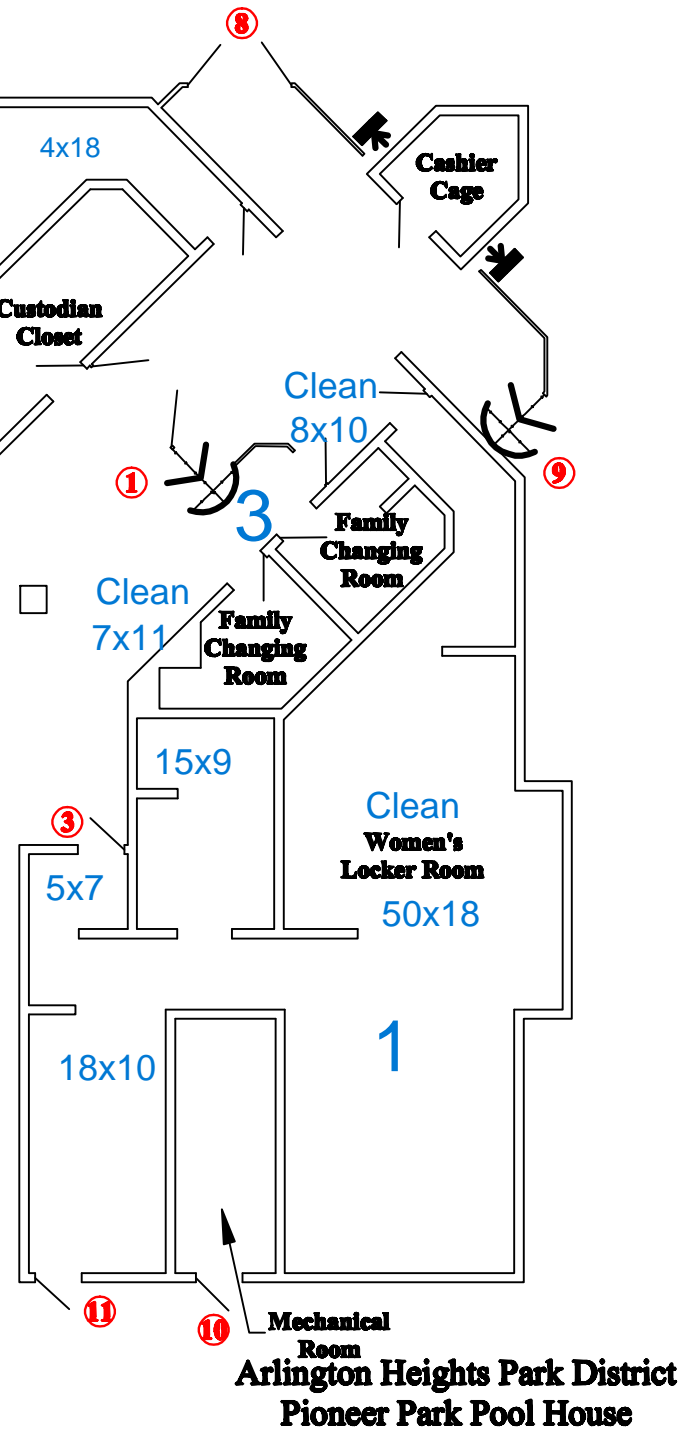
5- Hall 133 sf.

6- Ladies Shower room 10x8  
is used for storage.  
Do not clean.



- 6 Sinks
- 5 Urinals
- 10 Toilets
- 20 Showers

- 1- Women's Locker room
- 2 - Men's Locker room
- 3 - Family Changing room



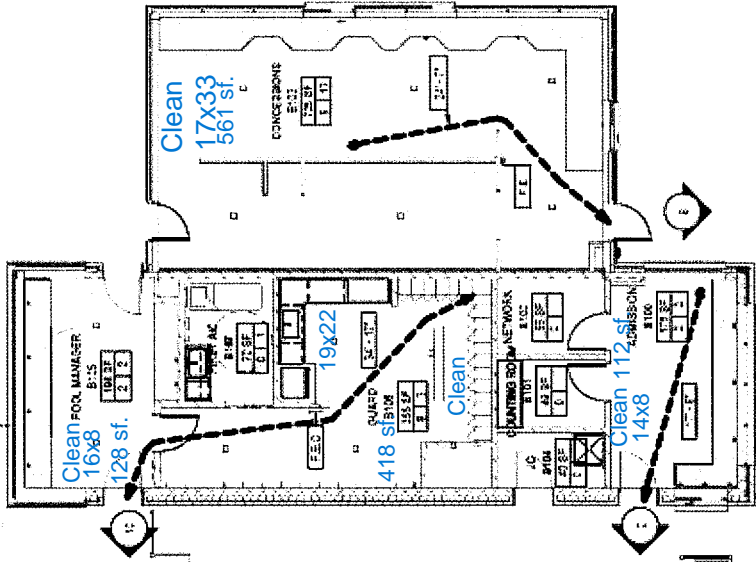
# Pioneer Park Pool House



**Arlington Heights Park District  
Pioneer Park Pool House**

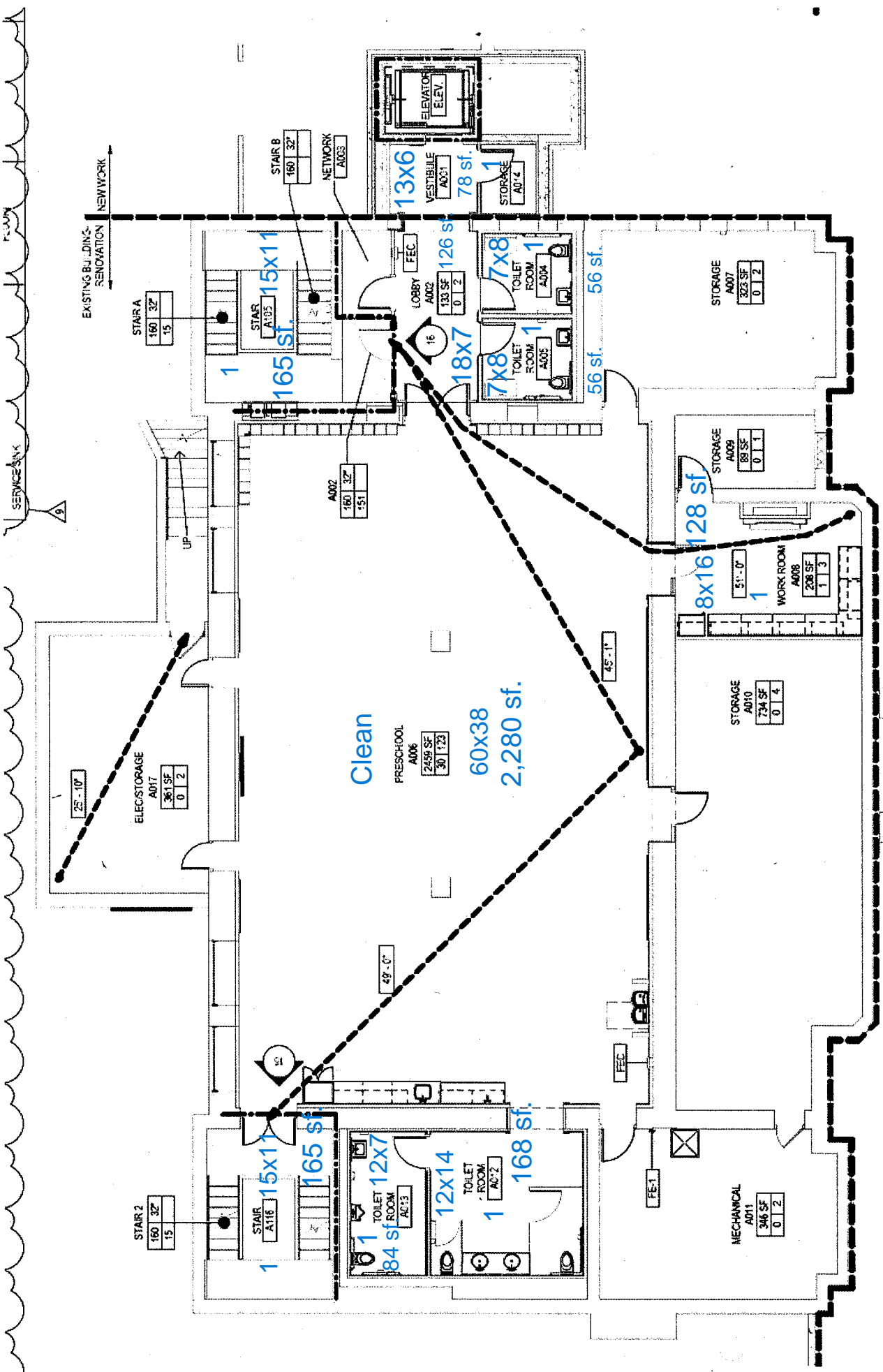
1 Sink

1,219 Total sf.



Recreation Park Concession  
Arlington Heights Park District





5 Sinks 1- Areas to be cleaned

5 Toilets 3,306 Total sf.

1 Urinal

Recreation Park

Arlington Heights Park District

Basement



Stand-alone restroom at Recreation Park- near the playground

128 Total  
sf.

LEGEND	
SYMBOL DESCRIPTION	AREA/ QUANTITY
EXTERIOR WALL LIGHTS	4
INTERIOR CEILING LIGHTS	3

WALL TYPE SCHEDULE	
6" REINFORCED CONCRETE MASONRY BLOCK WALL WITH MORTAR JOINTS, GROUTED SOLID ALL CELLS RUNNING BOND PATTERN.	

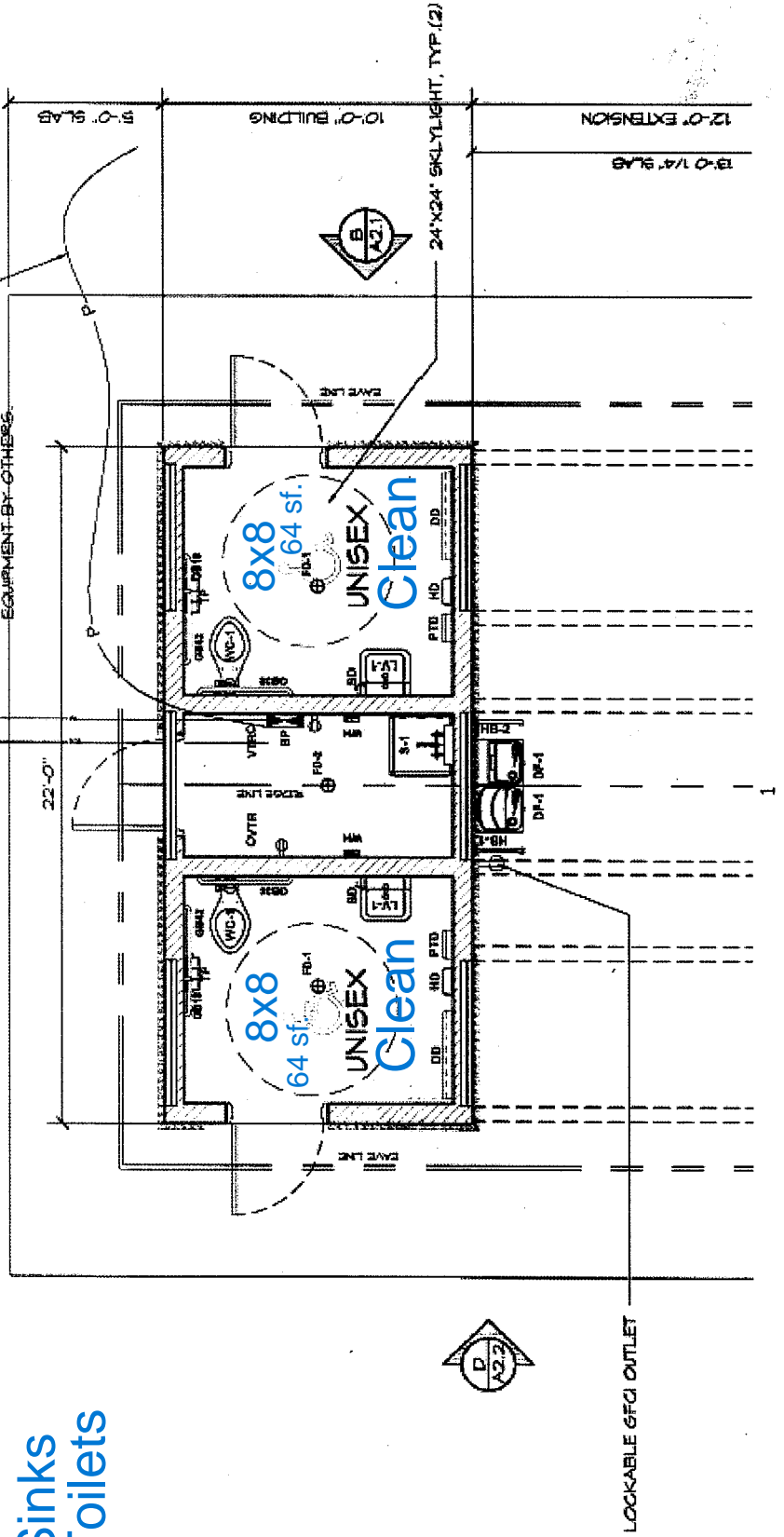
TO SANITARY SEWER SYSTEM CONFIRMED BY OWNER



1 1/2" WATER PIPE WATER SERVICE INTO BUILDING

UNDERGROUND ELECTRICAL SERVICE VERIFY REQUIREMENTS FOR TYING INTO SERVICE UTILITY EQUIPMENT BY OTHERS.

2 Sinks  
2 Toilets



LOCKABLE GFCI OUTLET

